

Datasheet for ABIN2790032  
**anti-ENGASE antibody (N-Term)**



[Go to Product page](#)

1 Image

## Overview

Quantity:	100 µL
Target:	ENGASE
Binding Specificity:	N-Term
Reactivity:	Human
Host:	Rabbit
Clonality:	Polyclonal
Conjugate:	This ENGASE antibody is un-conjugated
Application:	Western Blotting (WB)

## Product Details

Immunogen:	The immunogen is a synthetic peptide directed towards the N-terminal region of Human ENGASE
Sequence:	RRRQLQGLAA PEAGTQEEQE DQEPRRRRR PGRSIKDEEE ETVFREVVSF
Predicted Reactivity:	Human: 100%
Characteristics:	This is a rabbit polyclonal antibody against ENGASE. It was validated on Western Blot.
Purification:	Affinity Purified

## Target Details

Target:	ENGASE
Alternative Name:	ENGASE ( <a href="#">ENGASE Products</a> )

## Target Details

---

Background: This gene encodes a cytosolic enzyme which catalyzes the hydrolysis of peptides and proteins with mannose modifications to produce free oligosaccharides.  
Protein Interaction Partner: UBC, ZP3,  
Protein Size: 377

---

Molecular Weight: 41 kDa

---

Gene ID: 64772

---

## Application Details

---

Restrictions: For Research Use only

---

## Handling

---

Format: Liquid

---

Concentration: 1 mg/mL

---

Buffer: Liquid. Purified antibody supplied in 1x PBS buffer with 0.09 % (w/v) sodium azide and 2 % sucrose.

---

Preservative: Sodium azide

---

Precaution of Use: This product contains Sodium azide: a POISONOUS AND HAZARDOUS SUBSTANCE which should be handled by trained staff only.

---

Handling Advice: Avoid repeat freeze-thaw cycles.

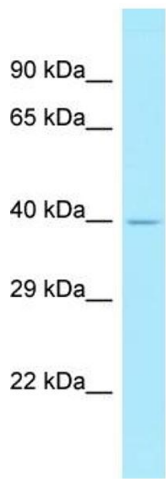
---

Storage: -20 °C

---

Storage Comment: For short term use, store at 2-8°C up to 1 week. For long term storage, store at -20°C in small aliquots to prevent freeze-thaw cycles.

---



Host: Rabbit  
Target Name: ENGASE  
Sample Tissue: 721\_B Cell Lysate  
Antibody Dilution: 1.0µg/ml

### Western Blotting

**Image 1.** Host: Rabbit Target Name: ENGASE Sample Type: 721\_B Whole Cell lysates Antibody Dilution: 1.0ug/ml