

Datasheet for ABIN2790037

**anti-GMFB antibody (Middle Region)**[Go to Product page](#)**1** Image

## Overview

Quantity:	100 µL
Target:	GMFB
Binding Specificity:	Middle Region
Reactivity:	Human, Mouse, Rat, Cow, Dog, Guinea Pig, Horse, Rabbit
Host:	Rabbit
Clonality:	Polyclonal
Conjugate:	This GMFB antibody is un-conjugated
Application:	Western Blotting (WB)

## Product Details

Sequence:	ELEGISPDEL KDELPERQPR FIVYSYKYQH DDGRVSYPLC FIFSSPVGCK
Predicted Reactivity:	Cow: 100%, Dog: 100%, Guinea Pig: 100%, Horse: 100%, Human: 100%, Mouse: 93%, Rabbit: 93%, Rat: 100%
Characteristics:	This is a rabbit polyclonal antibody against GMFB. It was validated on Western Blot.
Purification:	Affinity Purified

## Target Details

Target:	GMFB
Alternative Name:	GMFB ( <a href="#">GMFB Products</a> )
Background:	This protein causes differentiation of brain cells, stimulation of neural regeneration, and

## Target Details

inhibition of proliferation of tumor cells.

Alias Symbols: GMF

Protein Interaction Partner: UBC, ELAVL1, MAPK3, RPS6KA1, PRKACA, MAPK14, PRKCA, MAPK1, CSNK2A1,

Protein Size: 142

Molecular Weight: 17 kDa

Gene ID: 2764

NCBI Accession: [NM\\_004124](#), [NP\\_004115](#)

UniProt: [Q5R6P6](#)

## Application Details

Application Notes: Optimal working dilutions should be determined experimentally by the investigator.

Comment: Antigen size: 142 AA

Restrictions: For Research Use only

## Handling

Format: Liquid

Concentration: Lot specific

Buffer: Liquid. Purified antibody supplied in 1x PBS buffer with 0.09 % (w/v) sodium azide and 2 % sucrose.

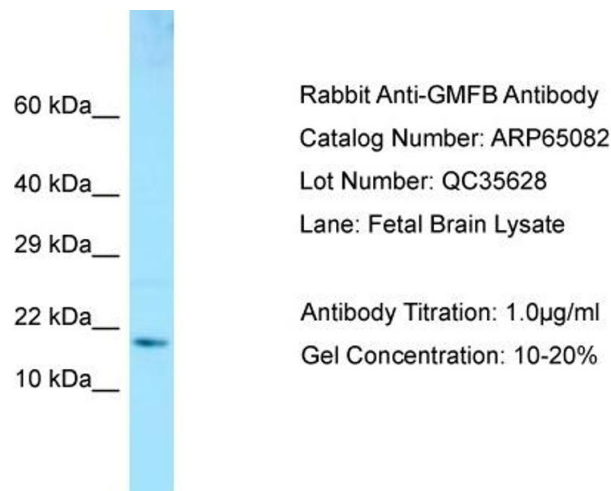
Preservative: Sodium azide

Precaution of Use: This product contains Sodium azide: a POISONOUS AND HAZARDOUS SUBSTANCE which should be handled by trained staff only.

Handling Advice: Avoid repeated freeze-thaw cycles.

Storage: -20 °C

Storage Comment: For short term use, store at 2-8°C up to 1 week. For long term storage, store at -20°C in small aliquots to prevent freeze-thaw cycles.



**Western Blotting**

**Image 1.**