

Datasheet for ABIN2790042  
**anti-PTGFR antibody (C-Term)**[Go to Product page](#)

## 2 Images

## Overview

Quantity:	100 µL
Target:	PTGFR
Binding Specificity:	C-Term
Reactivity:	Human, Mouse, Rat, Horse, Rabbit, Dog, Pig, Cow, Guinea Pig, Sheep
Host:	Rabbit
Clonality:	Polyclonal
Conjugate:	This PTGFR antibody is un-conjugated
Application:	Western Blotting (WB)

## Product Details

Immunogen:	The immunogen is a synthetic peptide directed towards the C-terminal region of Human PTGFR
Sequence:	RFYLLLSFLL GLLALGVSL CNAITGITLL RVKFKSQQHR QGRSHHLEMV
Predicted Reactivity:	Cow: 92%, Dog: 100%, Guinea Pig: 86%, Horse: 93%, Human: 100%, Mouse: 100%, Pig: 100%, Rabbit: 100%, Rat: 93%, Sheep: 92%
Characteristics:	This is a rabbit polyclonal antibody against PTGFR. It was validated on Western Blot.
Purification:	Affinity Purified

## Target Details

Target:	PTGFR
Alternative Name:	PTGFR ( <a href="#">PTGFR Products</a> )

## Target Details

Background:	<p>The protein encoded by this gene is member of the G-protein coupled receptor family. This protein is a receptor for prostaglandin F2-alpha (PGF2-alpha), which is known to be a potent luteolytic agent, and may also be involved in modulating intraocular pressure and smooth muscle contraction in uterus. Knockout studies in mice suggest that the interaction of PGF2-alpha with this receptor may initiate parturition in ovarian luteal cells and thus induce luteolysis. Two transcript variants encoding different isoforms have been found for this gene.</p> <p>Alias Symbols: FP, MGC120498, MGC46203</p> <p>Protein Interaction Partner: UBC, PTGFR, PTGER2, PTGDS, PTGER1, PTGES2,</p> <p>Protein Size: 359</p>
Molecular Weight:	37 kDa
Gene ID:	5737
NCBI Accession:	<a href="#">NM_000959</a> , <a href="#">NP_000950</a>
UniProt:	<a href="#">P43088</a>

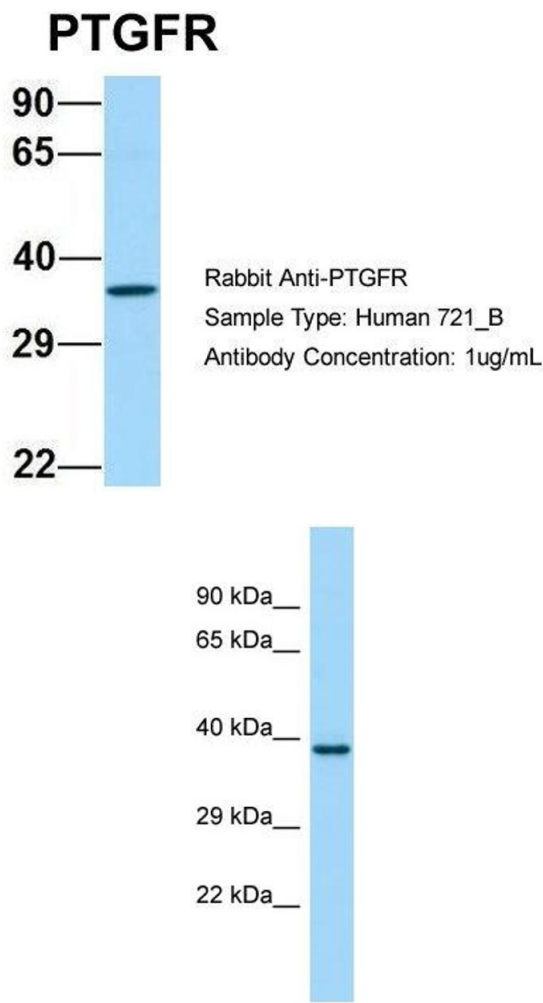
## Application Details

Application Notes:	Optimal working dilutions should be determined experimentally by the investigator.
Comment:	Antigen size: 359 AA
Restrictions:	For Research Use only

## Handling

Format:	Liquid
Concentration:	Lot specific
Buffer:	Liquid. Purified antibody supplied in 1x PBS buffer with 0.09 % (w/v) sodium azide and 2 % sucrose.
Preservative:	Sodium azide
Precaution of Use:	This product contains Sodium azide: a POISONOUS AND HAZARDOUS SUBSTANCE which should be handled by trained staff only.
Handling Advice:	Avoid repeated freeze-thaw cycles.
Storage:	-20 °C
Storage Comment:	For short term use, store at 2-8°C up to 1 week. For long term storage, store at -20°C in small

aliquots to prevent freeze-thaw cycles.



**Western Blotting**

**Image 1.** Host: Rabbit Target Name: PTGFR Sample Type: Human 721\_B Antibody Dilution: 1.0ug/ml PTGFR is supported by BioGPS gene expression data to be expressed in 721\_B

**Western Blotting**

**Image 2.** WB Suggested Anti-PTGFR Antibody Titration: 1.0 ug/ml Positive Control: Fetal kidney