

Datasheet for ABIN2790047
anti-BIN3 antibody (C-Term)



[Go to Product page](#)

1 Image

Overview

Quantity:	100 µL
Target:	BIN3
Binding Specificity:	C-Term
Reactivity:	Human, Mouse, Rat, Dog, Cow, Guinea Pig, Horse, Rabbit
Host:	Rabbit
Clonality:	Polyclonal
Conjugate:	This BIN3 antibody is un-conjugated
Application:	Western Blotting (WB)

Product Details

Sequence:	LDYFQPSFES LIRAQVVYYS EMHKIFGDLS HQLDQPGHSD EQRERENEAK
Predicted Reactivity:	Cow: 100%, Dog: 85%, Guinea Pig: 100%, Horse: 86%, Human: 100%, Mouse: 93%, Rabbit: 93%, Rat: 100%
Characteristics:	This is a rabbit polyclonal antibody against BIN3. It was validated on Western Blot.
Purification:	Affinity Purified

Target Details

Target:	BIN3
Alternative Name:	BIN3 (BIN3 Products)
Background:	The product of this gene is a member of the BAR domain protein family. The encoded protein is

Target Details

comprised solely of a BAR domain which is predicted to form coiled-coil structures and proposed to mediate dimerization, sense and induce membrane curvature, and bind small GTPases. BAR domain proteins have been implicated in endocytosis, intracellular transport, and a diverse set of other processes.

Alias Symbols: MGC14978

Protein Interaction Partner: UBC, DNMBP, ERH,

Protein Size: 253

Molecular Weight: 30 kDa

Gene ID: 55909

NCBI Accession: [NM_018688](#), [NP_061158](#)

UniProt: [Q9NQY0](#)

Application Details

Application Notes: Optimal working dilutions should be determined experimentally by the investigator.

Comment: Antigen size: 253 AA

Restrictions: For Research Use only

Handling

Format: Liquid

Concentration: Lot specific

Buffer: Liquid. Purified antibody supplied in 1x PBS buffer with 0.09 % (w/v) sodium azide and 2 % sucrose.

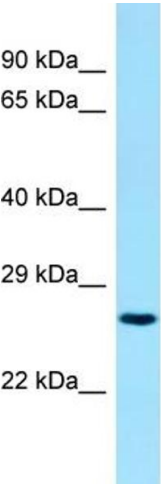
Preservative: Sodium azide

Precaution of Use: This product contains Sodium azide: a POISONOUS AND HAZARDOUS SUBSTANCE which should be handled by trained staff only.

Handling Advice: Avoid repeated freeze-thaw cycles.

Storage: -20 °C

Storage Comment: For short term use, store at 2-8°C up to 1 week. For long term storage, store at -20°C in small aliquots to prevent freeze-thaw cycles.



Rabbit Anti-BIN3 Antibody
Catalog Number: ARP65113
Lot Number: QC35652
Lane: Fetal Liver Lysate

Antibody Titration: 1.0µg/ml
Gel Concentration: 12%

Western Blotting

Image 1.