

Datasheet for ABIN2790053  
**anti-PDE6G antibody (N-Term)**[Go to Product page](#)

## 1 Image

## Overview

|                      |   |
|----------------------|---|
| Quantity:            | 100 µL  |
| Target:              | PDE6G   |
| Binding Specificity: | N-Term  |
| Reactivity:          | Human, Mouse, Rat, Cow, Dog, Guinea Pig, Horse, Rabbit, Zebrafish (Danio rerio) |
| Host:                | Rabbit  |
| Clonality:           | Polyclonal  |
| Conjugate:           | This PDE6G antibody is un-conjugated  |
| Application:         | Western Blotting (WB)   |

## Product Details

|                       |   |
|-----------------------|---|
| Sequence:             | GPVTPRKGPP KFKQRQTRQF KSKPPKKG VQ GFGDDIPGME GLGTDITVIC   |
| Predicted Reactivity: | Cow: 100%, Dog: 100%, Guinea Pig: 100%, Horse: 100%, Human: 100%, Mouse: 100%, Rabbit: 100%, Rat: 100%, Zebrafish: 100% |
| Characteristics:      | This is a rabbit polyclonal antibody against PDE6G. It was validated on Western Blot.                                   |
| Purification:         | Affinity Purified   |

## Target Details

|                   |  |
|-------------------|--|
| Target:           | PDE6G  |
| Alternative Name: | PDE6G ( <a href="#">PDE6G Products</a> )   |
| Background:       | This gene encodes the gamma subunit of cyclic GMP-phosphodiesterase, which is composed |

## Target Details

of alpha- and beta- catalytic subunits and two identical, inhibitory gamma subunits. This gene is expressed in rod photoreceptors and functions in the phototransduction signaling cascade. It is also expressed in a variety of other tissues, and has been shown to regulate the c-Src protein kinase and G-protein-coupled receptor kinase 2. Alternative splicing results in multiple transcript variants.

Alias Symbols: DKFZp686C0587, MGC125749, PDEG

Protein Interaction Partner: L3MBTL3, BHLHE40, FNBP1, PDE6G, TRIP10, DNM2, MAPK3, SRC, GNAO1, ADRBK1, GRB2,

Protein Size: 87

|                   |   |
|-------------------|---|
| Molecular Weight: | 10 kDa  |
| Gene ID:          | 5148  |
| NCBI Accession:   | <a href="#">NM_002602</a> , <a href="#">NP_002593</a>   |
| UniProt:          | <a href="#">P18545</a>  |
| Pathways:         | <a href="#">EGFR Signaling Pathway</a> , <a href="#">Regulation of G-Protein Coupled Receptor Protein Signaling</a> , <a href="#">Phototransduction</a> |

## Application Details

|                    |  |
|--------------------|--|
| Application Notes: | Optimal working dilutions should be determined experimentally by the investigator. |
| Comment:           | Antigen size: 87 AA  |
| Restrictions:      | For Research Use only  |

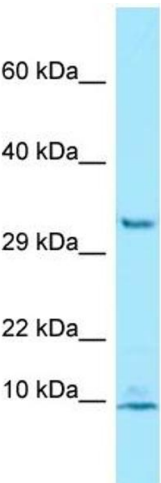
## Handling

|                    |  |
|--------------------|--|
| Format:            | Liquid   |
| Concentration:     | Lot specific   |
| Buffer:            | Liquid. Purified antibody supplied in 1x PBS buffer with 0.09 % (w/v) sodium azide and 2 % sucrose.                    |
| Preservative:      | Sodium azide   |
| Precaution of Use: | This product contains Sodium azide: a POISONOUS AND HAZARDOUS SUBSTANCE which should be handled by trained staff only. |
| Handling Advice:   | Avoid repeated freeze-thaw cycles.   |

Handling

|                  |   |
|------------------|---|
| Storage:         | -20 °C  |
| Storage Comment: | For short term use, store at 2-8°C up to 1 week. For long term storage, store at -20°C in small aliquots to prevent freeze-thaw cycles. |

Images



Rabbit Anti-PDE6G Antibody  
Catalog Number: ARP65136  
Lot Number: QC35669  
Lane: Jurkat Cell Lysate

Antibody Titration: 1.0µg/ml  
Gel Concentration: 10-20%

Western Blotting

Image 1.