



[Go to Product page](#)

Datasheet for ABIN2790066
anti-IMP4 antibody (C-Term)

1 Image

Overview

Quantity:	100 µL
Target:	IMP4
Binding Specificity:	C-Term
Reactivity:	Human, Mouse, Rat, Horse, Pig, Rabbit, Cow, Dog, Guinea Pig
Host:	Rabbit
Clonality:	Polyclonal
Conjugate:	This IMP4 antibody is un-conjugated
Application:	Western Blotting (WB)

Product Details

Sequence:	VELTEVGPRF ELKLYMIRLG TLEQEATADV EWRWHPYTNT ARKRVFLSTE
Predicted Reactivity:	Cow: 86%, Dog: 93%, Guinea Pig: 79%, Horse: 100%, Human: 100%, Mouse: 93%, Pig: 86%, Rabbit: 93%, Rat: 93%
Characteristics:	This is a rabbit polyclonal antibody against IMP4. It was validated on Western Blot.
Purification:	Affinity Purified

Target Details

Target:	IMP4
Alternative Name:	IMP4 (IMP4 Products)
Background:	IMP4 forms a ternary complex with IMP3 and MPP10 that interacts with U3 small nucleolar

Target Details

RNA (snoRNA), which is required for the early cleavage steps in pre-rRNA processing.

Alias Symbols: BXDC4, MGC19606

Protein Interaction Partner: ZBTB7B, SUMO1, NEDD8, APP, UBC, MPHOSPH10,

Protein Size: 291

Molecular Weight: 34 kDa

Gene ID: 92856

NCBI Accession: [NM_033416](#), [NP_219484](#)

UniProt: [Q96G21](#)

Application Details

Application Notes: Optimal working dilutions should be determined experimentally by the investigator.

Comment: Antigen size: 291 AA

Restrictions: For Research Use only

Handling

Format: Liquid

Concentration: Lot specific

Buffer: Liquid. Purified antibody supplied in 1x PBS buffer with 0.09 % (w/v) sodium azide and 2 % sucrose.

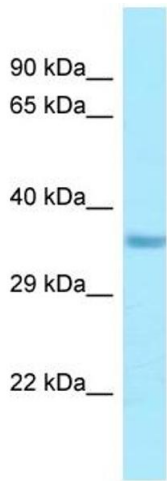
Preservative: Sodium azide

Precaution of Use: This product contains Sodium azide: a POISONOUS AND HAZARDOUS SUBSTANCE which should be handled by trained staff only.

Handling Advice: Avoid repeated freeze-thaw cycles.

Storage: -20 °C

Storage Comment: For short term use, store at 2-8°C up to 1 week. For long term storage, store at -20°C in small aliquots to prevent freeze-thaw cycles.



Rabbit Anti-IMP4 Antibody
Catalog Number: ARP65172
Lot Number: QC35693
Lane: HepG2 Cell Lysate

Antibody Titration: 1.0µg/ml
Gel Concentration: 12%

Western Blotting

Image 1.