

Datasheet for ABIN2790074  
**anti-TCL1B antibody (N-Term)**[Go to Product page](#)

## 1 Image

## Overview

Quantity:	100 µL
Target:	TCL1B
Binding Specificity:	N-Term
Reactivity:	Human
Host:	Rabbit
Clonality:	Polyclonal
Conjugate:	This TCL1B antibody is un-conjugated
Application:	Western Blotting (WB)

## Product Details

Sequence:	NPSRREWARA SQGSRYEPSI TVHLWQMAVH TRELLSSGQM PFSQLPAVWQ
Predicted Reactivity:	Human: 100%
Characteristics:	This is a rabbit polyclonal antibody against TCL1B. It was validated on Western Blot.
Purification:	Affinity Purified

## Target Details

Target:	TCL1B
Alternative Name:	TCL1B ( <a href="#">TCL1B Products</a> )
Background:	TCL1B enhances the phosphorylation and activation of AKT1 and AKT2. Alias Symbols: TML1

## Target Details

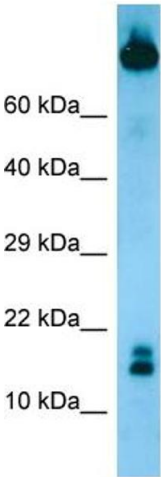
	Protein Interaction Partner: APP, UBC, TNPO2, AKT2, AKT1, Protein Size: 128
Molecular Weight:	15 kDa
Gene ID:	9623
NCBI Accession:	<a href="#">NM_004918</a> , <a href="#">NP_004909</a>
UniProt:	<a href="#">O95988</a>

## Application Details

Application Notes:	Optimal working dilutions should be determined experimentally by the investigator.
Comment:	Antigen size: 128 AA
Restrictions:	For Research Use only

## Handling

Format:	Liquid
Concentration:	Lot specific
Buffer:	Liquid. Purified antibody supplied in 1x PBS buffer with 0.09 % (w/v) sodium azide and 2 % sucrose.
Preservative:	Sodium azide
Precaution of Use:	This product contains Sodium azide: a POISONOUS AND HAZARDOUS SUBSTANCE which should be handled by trained staff only.
Handling Advice:	Avoid repeated freeze-thaw cycles.
Storage:	-20 °C
Storage Comment:	For short term use, store at 2-8°C up to 1 week. For long term storage, store at -20°C in small aliquots to prevent freeze-thaw cycles.



Host: Rabbit  
Target Name: TCL1B  
Sample Tissue: MCF7 Cell Lysate  
Antibody Dilution: 1.0µg/ml

Western Blotting

**Image 1. Host:** Rabbit

**Target Name:** TCL1B

**Antibody Dilution:** 1.0ug/ml

**Sample Tissue:** MCF7 cell lysate