

Datasheet for ABIN2790083

## anti-Emilin1 antibody (C-Term)



[Go to Product page](#)

### 1 Image

#### Overview

Quantity:	100 µL
Target:	Emilin1 (EMILIN1)
Binding Specificity:	C-Term
Reactivity:	Human, Mouse, Rat, Pig, Rabbit, Cow, Dog, Horse, Guinea Pig
Host:	Rabbit
Clonality:	Polyclonal
Conjugate:	This Emilin1 antibody is un-conjugated
Application:	Western Blotting (WB)

#### Product Details

Immunogen:	The immunogen is a synthetic peptide directed towards the C-terminal region of Human EMILIN1
Sequence:	QGADLADLGA TKDRIISEIN RLQQEATEHA TESEERFRGL EEGQAQAGQC
Predicted Reactivity:	Cow: 100%, Dog: 100%, Guinea Pig: 93%, Horse: 100%, Human: 100%, Mouse: 93%, Pig: 100%, Rabbit: 100%, Rat: 93%
Characteristics:	This is a rabbit polyclonal antibody against EMILIN1. It was validated on Western Blot.
Purification:	Affinity Purified

#### Target Details

Target:	Emilin1 (EMILIN1)
---------	-------------------

## Target Details

Alternative Name:	EMILIN1 ( <a href="#">EMILIN1 Products</a> )
Background:	<p>This gene encodes an extracellular matrix glycoprotein that is characterized by an N-terminal microfibril interface domain, a coiled-coiled alpha-helical domain, a collagenous domain and a C-terminal globular C1q domain. The encoded protein associates with elastic fibers at the interface between elastin and microfibrils and may play a role in the development of elastic tissues including large blood vessels, dermis, heart and lung.</p> <p>Alias Symbols: DKFZp586M121, EMI, EMILIN, gp115</p> <p>Protein Interaction Partner: BEX5, PLAC9, RIBC1, IFT20, ZC2HC1C, MTMR9, NGFRAP1, EMILIN1, NMI, TAX1BP1, CTAGE5, LAIR2, FZR1, DCTN2, CDC23, NUMA1, DYNC1I1, CDC27, EMILIN2,</p> <p>Protein Size: 1016</p>
Molecular Weight:	2 kDa
Gene ID:	11117
NCBI Accession:	<a href="#">NM_007046</a> , <a href="#">NP_008977</a>
UniProt:	<a href="#">Q9Y6C2</a>

## Application Details

Application Notes:	Optimal working dilutions should be determined experimentally by the investigator.
Comment:	Antigen size: 1016 AA
Restrictions:	For Research Use only

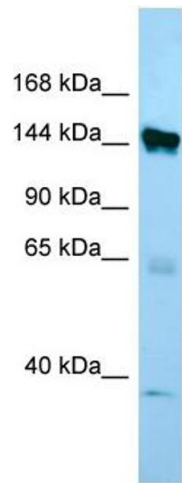
## Handling

Format:	Liquid
Concentration:	Lot specific
Buffer:	Liquid. Purified antibody supplied in 1x PBS buffer with 0.09 % (w/v) sodium azide and 2 % sucrose.
Preservative:	Sodium azide
Precaution of Use:	This product contains Sodium azide: a POISONOUS AND HAZARDOUS SUBSTANCE which should be handled by trained staff only.
Handling Advice:	Avoid repeated freeze-thaw cycles.

Handling

Storage:	-20 °C
Storage Comment:	For short term use, store at 2-8°C up to 1 week. For long term storage, store at -20°C in small aliquots to prevent freeze-thaw cycles.

Images



Western Blotting

**Image 1.** WB Suggested Anti-EMILIN1 Antibody Titration:  
1.0 ug/ml Positive Control: MCF7 Whole Cell