

Datasheet for ABIN2790084

**anti-EPH Receptor A6 antibody (N-Term)****2** Images[Go to Product page](#)

## Overview

Quantity:	100 µL
Target:	EPH Receptor A6 (Epha6)
Binding Specificity:	N-Term
Reactivity:	Human, Mouse, Rat, Guinea Pig, Horse, Rabbit, Zebrafish (Danio rerio), Cow, Dog
Host:	Rabbit
Clonality:	Polyclonal
Conjugate:	This EPH Receptor A6 antibody is un-conjugated
Application:	Western Blotting (WB)

## Product Details

Immunogen:	The immunogen is a synthetic peptide directed towards the N-terminal region of Human EPHA6
Sequence:	DTIPRVDSST LVEVRGSCVK SAEERDTPKL YCGADGDWLV PLGRICSTG
Predicted Reactivity:	Cow: 100%, Dog: 100%, Guinea Pig: 100%, Horse: 100%, Human: 100%, Mouse: 100%, Rabbit: 100%, Rat: 100%, Zebrafish: 100%
Characteristics:	This is a rabbit polyclonal antibody against EPHA6. It was validated on Western Blot.
Purification:	Affinity Purified

## Target Details

Target:	EPH Receptor A6 (Epha6)
Alternative Name:	EPHA6 ( <a href="#">Epha6 Products</a> )

## Target Details

Background:	<p>EPHA6 is a receptor tyrosine kinase which binds promiscuously GPI-anchored ephrin-A family ligands residing on adjacent cells, leading to contact-dependent bidirectional signaling into neighboring cells. The signaling pathway downstream of the receptor is referred to as forward signaling while the signaling pathway downstream of the ephrin ligand is referred to as reverse signaling.</p> <p>Alias Symbols: DKFZp434C1418, EPA6, FLJ35246, PRO57066</p> <p>Protein Interaction Partner: UBC, EFNA4, EFNA1,</p> <p>Protein Size: 1130</p>
Molecular Weight:	126 kDa
Gene ID:	285220
NCBI Accession:	<a href="#">NM_001080448</a> , <a href="#">NP_001073917</a>
UniProt:	<a href="#">Q9UF33</a>
Pathways:	<a href="#">RTK Signaling</a>

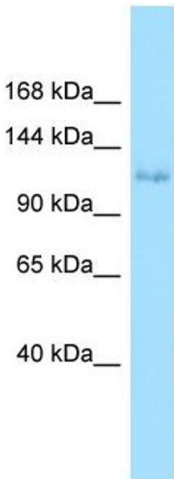
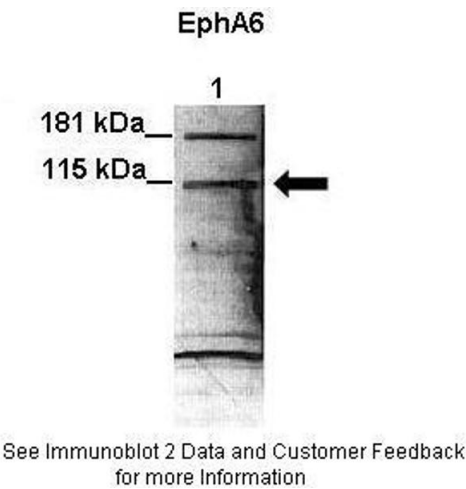
## Application Details

Application Notes:	Optimal working dilutions should be determined experimentally by the investigator.
Comment:	Antigen size: 1130 AA
Restrictions:	For Research Use only

## Handling

Format:	Liquid
Concentration:	Lot specific
Buffer:	Liquid. Purified antibody supplied in 1x PBS buffer with 0.09 % (w/v) sodium azide and 2 % sucrose.
Preservative:	Sodium azide
Precaution of Use:	This product contains Sodium azide: a POISONOUS AND HAZARDOUS SUBSTANCE which should be handled by trained staff only.
Handling Advice:	Avoid repeated freeze-thaw cycles.
Storage:	-20 °C
Storage Comment:	For short term use, store at 2-8°C up to 1 week. For long term storage, store at -20°C in small

aliquots to prevent freeze-thaw cycles.



Western Blotting

**Image 1.** Lanes: Lane 1: 35ug H4 cell lysate Primary Antibody Dilution: 1:1000 Secondary Antibody: Anti-rabbit-HRP Secondary Antibody Dilution: 1:5000 Gene Name: EPHA6 Submitted by: Erika Mathes Lisabeth, Sanford-Burnham Medical Research Institute

Western Blotting

**Image 2.** WB Suggested Anti-EPHA6 Antibody Titration: 1.0 ug/ml Positive Control: 721\_B Whole Cell