

Datasheet for ABIN2790091  
**anti-SEC61A1 antibody (C-Term)**[Go to Product page](#)

## 2 Images

## Overview

Quantity:	100 µL
Target:	SEC61A1
Binding Specificity:	C-Term
Reactivity:	Human, Mouse, Rat, Cow, Dog, Horse, Rabbit, Zebrafish (Danio rerio), Guinea Pig, Goat
Host:	Rabbit
Clonality:	Polyclonal
Conjugate:	This SEC61A1 antibody is un-conjugated
Application:	Western Blotting (WB)

## Product Details

Immunogen:	The immunogen is a synthetic peptide directed towards the C-terminal region of Human SEC61A1
Sequence:	TWIEVSGSSA KDVAKQLKEQ QMVMRGHRET SMVHELNRYI PTAAAFGGLC
Predicted Reactivity:	Cow: 100%, Dog: 100%, Goat: 100%, Guinea Pig: 100%, Horse: 100%, Human: 100%, Mouse: 100%, Rabbit: 100%, Rat: 100%, Zebrafish: 100%
Characteristics:	This is a rabbit polyclonal antibody against SEC61A1. It was validated on Western Blot.
Purification:	Affinity Purified

## Target Details

Target:	SEC61A1
---------	---------

## Target Details

Alternative Name:	SEC61A1 ( <a href="#">SEC61A1 Products</a> )
Background:	<p>The protein encoded by this gene belongs to the SECY/SEC61- alpha family. It appears to play a crucial role in the insertion of secretory and membrane polypeptides into the endoplasmic reticulum. This protein found to be tightly associated with membrane-bound ribosomes, either directly or through adaptor proteins. This gene encodes an alpha subunit of the heteromeric SEC61 complex, which also contains beta and gamma subunits.</p> <p>Alias Symbols: HSEC61, SEC61, SEC61A</p> <p>Protein Interaction Partner: UBC, EGFR, STAU1, ADRB2, ILK, CLN5, CLN3, env, MLH1, HSPA5, CFTR, MDC1, SEC61B, OPRD1, CALM1, BCAP31, BAG6, HLA-A, PDIA3, ASNA1, SUMO2, TMEM173, USP19, USP11, SERP1, SEC61A1, APOB, NDN, AP1S1,</p> <p>Protein Size: 476</p>
Molecular Weight:	52 kDa
Gene ID:	29927
NCBI Accession:	<a href="#">NM_013336</a> , <a href="#">NP_037468</a>
UniProt:	<a href="#">P61619</a>

## Application Details

Application Notes:	Optimal working dilutions should be determined experimentally by the investigator.
Comment:	Antigen size: 476 AA
Restrictions:	For Research Use only

## Handling

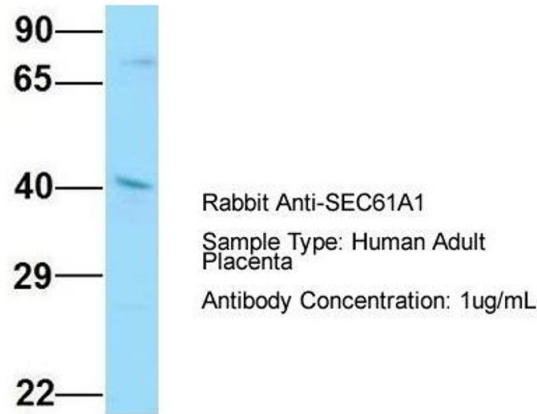
Format:	Liquid
Concentration:	Lot specific
Buffer:	Liquid. Purified antibody supplied in 1x PBS buffer with 0.09 % (w/v) sodium azide and 2 % sucrose.
Preservative:	Sodium azide
Precaution of Use:	This product contains Sodium azide: a POISONOUS AND HAZARDOUS SUBSTANCE which should be handled by trained staff only.
Handling Advice:	Avoid repeated freeze-thaw cycles.

Handling

Storage:	-20 °C
Storage Comment:	For short term use, store at 2-8°C up to 1 week. For long term storage, store at -20°C in small aliquots to prevent freeze-thaw cycles.

Images

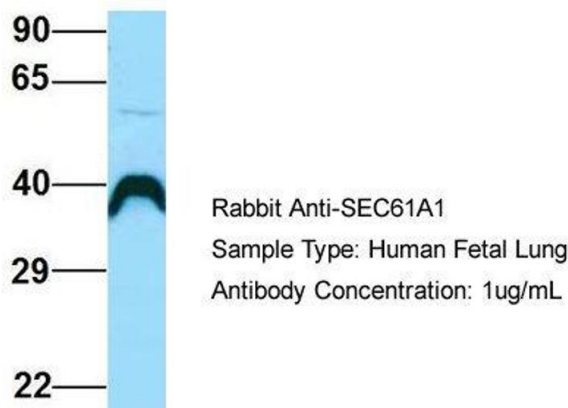
SEC61A1



Western Blotting

**Image 1.** Host: Rabbit  
Target Name: SEC61A1  
Sample Tissue: Human Adult Placenta  
Antibody Dilution: 1.0 µg/mL

SEC61A1



Western Blotting

**Image 2.** Host: Rabbit  
Target Name: SEC61A1  
Sample Tissue: Human Fetal Lung  
Antibody Dilution: 1.0 µg/mL