

Datasheet for ABIN2790111
anti-LANCL1 antibody (N-Term)[Go to Product page](#)

1 Image

Overview

Quantity:	100 µL
Target:	LANCL1
Binding Specificity:	N-Term
Reactivity:	Human, Mouse, Rat, Cow, Dog, Guinea Pig, Horse, Rabbit, Zebrafish (Danio rerio)
Host:	Rabbit
Clonality:	Polyclonal
Conjugate:	This LANCL1 antibody is un-conjugated
Application:	Western Blotting (WB)

Product Details

Sequence:	QRLTNKIREL LQQMERGLKS ADPRDGTGYT GWAGIAVLYL HLYDVFGDPA
Predicted Reactivity:	Cow: 86%, Dog: 86%, Guinea Pig: 93%, Horse: 93%, Human: 100%, Mouse: 100%, Rabbit: 93%, Rat: 93%, Zebrafish: 86%
Characteristics:	This is a rabbit polyclonal antibody against LANCL1. It was validated on Western Blot.
Purification:	Affinity Purified

Target Details

Target:	LANCL1
Alternative Name:	LANCL1 (LANCL1 Products)
Background:	This gene encodes a loosely associated peripheral membrane protein related to the LanC

Target Details

family of bacterial membrane-associated proteins involved in the biosynthesis of antimicrobial peptides. This protein may play a role as a peptide-modifying enzyme component in eukaryotic cells. Previously considered a member of the G-protein-coupled receptor superfamily, this protein is now in the LanC family. Multiple alternatively spliced variants, encoding the same protein, have been identified.

Alias Symbols: GPR69A, p40

Protein Interaction Partner: ERG, VHL, UBC, SERPINH1, CUL3, SIRT1, STOM,

Protein Size: 399

Molecular Weight: 45 kDa

Gene ID: 10314

NCBI Accession: [NM_006055](#), [NP_006046](#)

UniProt: [O43813](#)

Application Details

Application Notes: Optimal working dilutions should be determined experimentally by the investigator.

Comment: Antigen size: 399 AA

Restrictions: For Research Use only

Handling

Format: Liquid

Concentration: Lot specific

Buffer: Liquid. Purified antibody supplied in 1x PBS buffer with 0.09 % (w/v) sodium azide and 2 % sucrose.

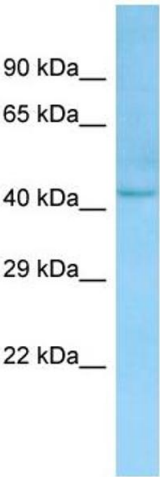
Preservative: Sodium azide

Precaution of Use: This product contains Sodium azide: a POISONOUS AND HAZARDOUS SUBSTANCE which should be handled by trained staff only.

Handling Advice: Avoid repeated freeze-thaw cycles.

Storage: -20 °C

Storage Comment: For short term use, store at 2-8°C up to 1 week. For long term storage, store at -20°C in small aliquots to prevent freeze-thaw cycles.



Western Blotting

Image 1.