

Datasheet for ABIN2790117  
**anti-MMP21 antibody (Middle Region)**[Go to Product page](#)

## 1 Image

## Overview

Quantity:	100 µL
Target:	MMP21
Binding Specificity:	Middle Region
Reactivity:	Human, Mouse, Rabbit, Rat, Zebrafish (Danio rerio), Guinea Pig, Horse, Dog
Host:	Rabbit
Clonality:	Polyclonal
Conjugate:	This MMP21 antibody is un-conjugated
Application:	Western Blotting (WB)

## Product Details

Immunogen:	The immunogen is a synthetic peptide directed towards the middle region of mouse MMP21
Sequence:	YIPQEPAFEL DWADRKAIQR LYGSCCKGSFD TVFDWIRKER NQY GEVRVR
Predicted Reactivity:	Dog: 92%, Guinea Pig: 100%, Horse: 100%, Human: 100%, Mouse: 100%, Rabbit: 86%, Rat: 100%, Zebrafish: 77%
Characteristics:	This is a rabbit polyclonal antibody against Mmp21. It was validated on Western Blot.
Purification:	Affinity Purified

## Target Details

Target:	MMP21
---------	-------

## Target Details

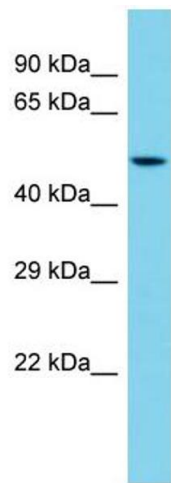
Alternative Name:	Mmp21 ( <a href="#">MMP21 Products</a> )
Background:	<p>This gene encodes a member of the matrix metalloproteinase family. Proteins in this family are involved in the breakdown of extracellular matrix for both normal physiological processes, such as embryonic development, reproduction, and tissue remodeling, and disease processes, such as asthma and tumor metastasis. The encoded protein may play an important role in embryogenesis, particularly in neuronal cells, as well as in lymphocyte development and survival.</p> <p>Alias Symbols: MMP-21</p> <p>Protein Size: 462</p>
Molecular Weight:	50 kDa
Gene ID:	118856
NCBI Accession:	<a href="#">NM_147191</a> , <a href="#">NP_671724</a>
UniProt:	<a href="#">Q8N119</a>

## Application Details

Restrictions:	For Research Use only
---------------	-----------------------

## Handling

Format:	Liquid
Concentration:	1 mg/mL
Buffer:	Liquid. Purified antibody supplied in 1x PBS buffer with 0.09 % (w/v) sodium azide and 2 % sucrose.
Preservative:	Sodium azide
Precaution of Use:	This product contains Sodium azide: a POISONOUS AND HAZARDOUS SUBSTANCE which should be handled by trained staff only.
Handling Advice:	Avoid repeat freeze-thaw cycles.
Storage:	-20 °C
Storage Comment:	For short term use, store at 2-8°C up to 1 week. For long term storage, store at -20°C in small aliquots to prevent freeze-thaw cycles.



**Western Blotting**

**Image 1.**