

Datasheet for ABIN2790119
anti-MRFAP1 antibody (C-Term)[Go to Product page](#)

1 Image

Overview

Quantity:	100 µL
Target:	MRFAP1
Binding Specificity:	C-Term
Reactivity:	Human, Cow, Pig, Dog
Host:	Rabbit
Clonality:	Polyclonal
Conjugate:	This MRFAP1 antibody is un-conjugated
Application:	Western Blotting (WB)

Product Details

Immunogen:	The immunogen is a synthetic peptide directed towards the C-terminal region of Human MRFAP1
Sequence:	KTQVEASEES ALNHLQNP GD AAEGRAAKRC EKAE EKAKEI AKMAEMLVEL
Predicted Reactivity:	Cow: 100%, Dog: 86%, Human: 100%, Pig: 100%
Characteristics:	This is a rabbit polyclonal antibody against MRFAP1. It was validated on Western Blot.
Purification:	Affinity Purified

Target Details

Target:	MRFAP1
Alternative Name:	MRFAP1 (MRFAP1 Products)

Target Details

Background: The function of this protein remains unknown.

Alias Symbols: PAM14, PGR1

Protein Interaction Partner: GOLGA8F, C3orf62, GOLGA8G, MRFAP1L1, C14orf93, DCDC2, MORF4L1, MORF4L2, SUV39H2, UBC, HTT, MAP1LC3B, C8orf33, PAM16, TK1, MRGBP, RB1,

Protein Size: 127

Molecular Weight: 15 kDa

Gene ID: 93621

NCBI Accession: [NM_033296](#), [NP_150638](#)

UniProt: [Q9Y605](#)

Application Details

Application Notes: Optimal working dilutions should be determined experimentally by the investigator.

Comment: Antigen size: 127 AA

Restrictions: For Research Use only

Handling

Format: Liquid

Concentration: Lot specific

Buffer: Liquid. Purified antibody supplied in 1x PBS buffer with 0.09 % (w/v) sodium azide and 2 % sucrose.

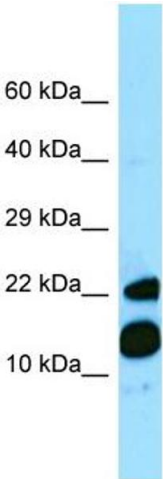
Preservative: Sodium azide

Precaution of Use: This product contains Sodium azide: a POISONOUS AND HAZARDOUS SUBSTANCE which should be handled by trained staff only.

Handling Advice: Avoid repeated freeze-thaw cycles.

Storage: -20 °C

Storage Comment: For short term use, store at 2-8°C up to 1 week. For long term storage, store at -20°C in small aliquots to prevent freeze-thaw cycles.



Western Blotting

Image 1. WB Suggested Anti-MRFAP1 Antibody Titration:
1.0 ug/ml Positive Control: Fetal Heart