

Datasheet for ABIN2790126
anti-NXNL1 antibody (C-Term)



[Go to Product page](#)

1 Image

Overview

Quantity:	100 µL
Target:	NXNL1
Binding Specificity:	C-Term
Reactivity:	Human, Cow, Dog, Pig
Host:	Rabbit
Clonality:	Polyclonal
Conjugate:	This NXNL1 antibody is un-conjugated
Application:	Western Blotting (WB)

Product Details

Immunogen:	The immunogen is a synthetic peptide directed towards the C-terminal region of Human NXNL1
Sequence:	DRNFQLPEDL EDQEPRSLTE CLRRHKYRVE KAARGGRDPG GGGGEEGGAG
Predicted Reactivity:	Cow: 79%, Dog: 79%, Human: 100%, Pig: 79%
Characteristics:	This is a rabbit polyclonal antibody against NXNL1. It was validated on Western Blot.
Purification:	Affinity Purified

Target Details

Target:	NXNL1
Alternative Name:	NXNL1 (NXNL1 Products)
Background:	NXNL1 may play a role in cone cell viability, slowing down cone degeneration, does not seem to

Target Details

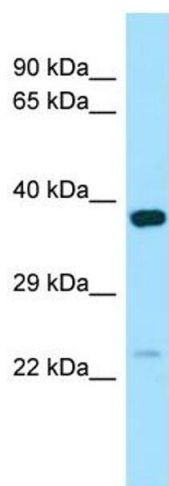
	play a role in degenerating rods. Alias Symbols: RDCVF, TXNL6 Protein Interaction Partner: TERF2IP, POT1, TERF2, TERF1, Protein Size: 212
Molecular Weight:	24 kDa
Gene ID:	115861
NCBI Accession:	NM_138454 , NP_612463
UniProt:	Q96CM4

Application Details

Application Notes:	Optimal working dilutions should be determined experimentally by the investigator.
Comment:	Antigen size: 212 AA
Restrictions:	For Research Use only

Handling

Format:	Liquid
Concentration:	Lot specific
Buffer:	Liquid. Purified antibody supplied in 1x PBS buffer with 0.09 % (w/v) sodium azide and 2 % sucrose.
Preservative:	Sodium azide
Precaution of Use:	This product contains Sodium azide: a POISONOUS AND HAZARDOUS SUBSTANCE which should be handled by trained staff only.
Handling Advice:	Avoid repeated freeze-thaw cycles.
Storage:	-20 °C
Storage Comment:	For short term use, store at 2-8°C up to 1 week. For long term storage, store at -20°C in small aliquots to prevent freeze-thaw cycles.



Western Blotting

Image 1. WB Suggested Anti-NXNL1 Antibody Titration: 1.0 ug/ml Positive Control: ACHN Whole Cell