

Datasheet for ABIN2790133
anti-SHoc2/Sur8 antibody (N-Term)



[Go to Product page](#)

1 Image

Overview

Quantity:	100 µL
Target:	SHoc2/Sur8 (SHOC2)
Binding Specificity:	N-Term
Reactivity:	Human, Mouse, Rat, Cow, Horse, Dog, Rabbit, Zebrafish (Danio rerio), Guinea Pig
Host:	Rabbit
Clonality:	Polyclonal
Conjugate:	This SHoc2/Sur8 antibody is un-conjugated
Application:	Western Blotting (WB)

Product Details

Immunogen:	The immunogen is a synthetic peptide directed towards the N-terminal region of Human SHOC2
Sequence:	NPAPGTRKKS SNAEVIKELN KCRENSMRL DLSKRSIHIL PSSIKELTQL
Predicted Reactivity:	Cow: 100%, Dog: 100%, Guinea Pig: 100%, Horse: 100%, Human: 100%, Mouse: 100%, Rabbit: 100%, Rat: 93%, Zebrafish: 93%
Characteristics:	This is a rabbit polyclonal antibody against SHOC2. It was validated on Western Blot.
Purification:	Affinity Purified

Target Details

Target:	SHoc2/Sur8 (SHOC2)
---------	--------------------

Target Details

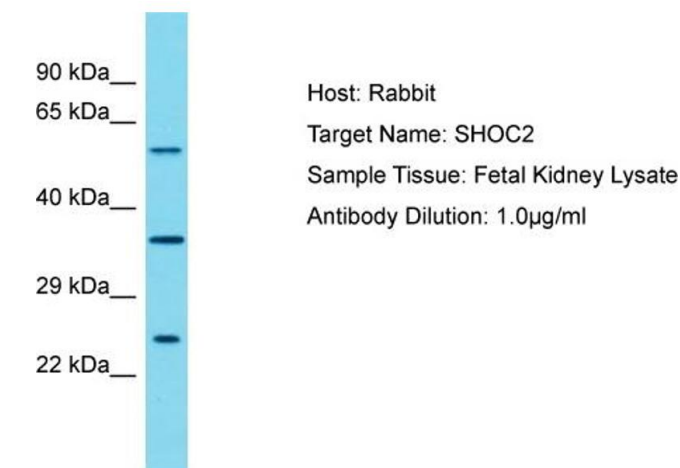
Alternative Name:	SHOC2 (SHOC2 Products)
Background:	<p>This gene encodes a protein that consists almost entirely of leucine-rich repeats, a domain implicated in protein-protein interactions. The protein may function as a scaffold linking RAS to downstream signal transducers in the RAS/ERK MAP kinase signaling cascade. Mutations in this gene have been associated with Noonan-like syndrome with loose anagen hair.</p> <p>Alias Symbols: SIAA0862, SOC2, SUR8</p> <p>Protein Interaction Partner: MRAS, HUWE1, UBC, RAF1, ESR1, APP, Shoc2, MYC, ERBB2IP, KRAS, HRAS, NRAS,</p> <p>Protein Size: 536</p>
Molecular Weight:	58 kDa
Gene ID:	8036
NCBI Accession:	NM_007373 , NP_031399

Application Details

Application Notes:	Optimal working dilution should be determined by the investigator.
Restrictions:	For Research Use only

Handling

Format:	Liquid
Concentration:	1 mg/mL
Buffer:	Liquid. Purified antibody supplied in 1x PBS buffer with 0.09 % (w/v) sodium azide and 2 % sucrose.
Preservative:	Sodium azide
Precaution of Use:	This product contains Sodium azide: a POISONOUS AND HAZARDOUS SUBSTANCE which should be handled by trained staff only.
Handling Advice:	Avoid repeat freeze-thaw cycles.
Storage:	-20 °C
Storage Comment:	For short term use, store at 2-8°C up to 1 week. For long term storage, store at -20°C in small aliquots to prevent freeze-thaw cycles.



Western Blotting

Image 1. Host: Rabbit Target Name: SHOC2 Sample Tissue: Human Fetal Kidney Antibody Dilution: 1ug/ml