

Datasheet for ABIN2790137  
**anti-SUCLG1 antibody (N-Term)**



[Go to Product page](#)

1 Image

## Overview

Quantity:	100 µL
Target:	SUCLG1
Binding Specificity:	N-Term
Reactivity:	Human, Mouse, Rat, Horse, Rabbit, Cow, Dog, Guinea Pig, Saccharomyces cerevisiae
Host:	Rabbit
Clonality:	Polyclonal
Conjugate:	This SUCLG1 antibody is un-conjugated
Application:	Western Blotting (WB)

## Product Details

Sequence:	GQTHLGLPVF NTVKEAKEQT GATASVIYVP PPFAAAINE AIEAEIPLVV
Predicted Reactivity:	Cow: 100%, Dog: 93%, Guinea Pig: 100%, Horse: 100%, Human: 100%, Mouse: 93%, Rabbit: 100%, Rat: 100%, Yeast: 92%
Characteristics:	This is a rabbit polyclonal antibody against SUCLG1. It was validated on Western Blot.
Purification:	Affinity Purified

## Target Details

Target:	SUCLG1
Alternative Name:	SUCLG1 ( <a href="#">SUCLG1 Products</a> )
Background:	This gene encodes the alpha subunit of the heterodimeric enzyme succinate coenzyme A

## Target Details

ligase. This enzyme is targeted to the mitochondria and catalyzes the conversion of succinyl CoA and ADP or GDP to succinate and ATP or GTP. Mutations in this gene are the cause of the metabolic disorder fatal infantile lactic acidosis and mitochondrial DNA depletion.

Alias Symbols: FLJ21114, FLJ43513, GALPHA, SUCLA1, MTDPS9

Protein Interaction Partner: SUMO2, ECT2, S100A16, SEPT11, RIF1, SEPT9, SELENBP1, SUCLA2, SUCLG2, SDHA, OXCT1, CHMP1B, UBC, MYC,

Protein Size: 346

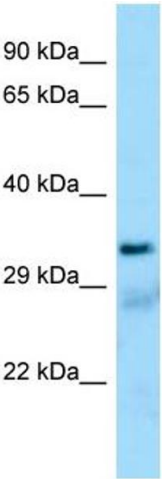
Molecular Weight:	33 kDa
Gene ID:	8802
NCBI Accession:	<a href="#">NM_003849</a> , <a href="#">NP_003840</a>
UniProt:	<a href="#">P53597</a>

## Application Details

Application Notes:	Optimal working dilutions should be determined experimentally by the investigator.
Comment:	Antigen size: 346 AA
Restrictions:	For Research Use only

## Handling

Format:	Liquid
Concentration:	Lot specific
Buffer:	Liquid. Purified antibody supplied in 1x PBS buffer with 0.09 % (w/v) sodium azide and 2 % sucrose.
Preservative:	Sodium azide
Precaution of Use:	This product contains Sodium azide: a POISONOUS AND HAZARDOUS SUBSTANCE which should be handled by trained staff only.
Handling Advice:	Avoid repeated freeze-thaw cycles.
Storage:	-20 °C
Storage Comment:	For short term use, store at 2-8°C up to 1 week. For long term storage, store at -20°C in small aliquots to prevent freeze-thaw cycles.



**Western Blotting**

**Image 1.**