

Datasheet for ABIN2790145
anti-CDC42BPB antibody (C-Term)



[Go to Product page](#)

1 Image

Overview

Quantity:	100 µL
Target:	CDC42BPB
Binding Specificity:	C-Term
Reactivity:	Human, Rat, Mouse, Horse, Pig, Rabbit, Cow, Dog
Host:	Rabbit
Clonality:	Polyclonal
Conjugate:	This CDC42BPB antibody is un-conjugated
Application:	Western Blotting (WB)

Product Details

Immunogen:	The immunogen is a synthetic peptide directed towards the C-terminal region of Human CDC42BPB
Sequence:	GLKLPDFQDS IFEYFNTAPL AHDLTFRITSS ASEQETQAPK PEASPSMSVA
Predicted Reactivity:	Cow: 93%, Dog: 92%, Horse: 100%, Human: 100%, Mouse: 83%, Pig: 93%, Rabbit: 86%, Rat: 93%
Characteristics:	This is a rabbit polyclonal antibody against CDC42BPB. It was validated on Western Blot.
Purification:	Affinity Purified

Target Details

Target:	CDC42BPB
Alternative Name:	CDC42BPB (CDC42BPB Products)

Target Details

Background:	<p>This gene encodes a member of the serine/threonine protein kinase family. The encoded protein contains a Cdc42/Rac-binding p21 binding domain resembling that of PAK kinase. The kinase domain of this protein is most closely related to that of myotonic dystrophy kinase-related ROK. Studies of the similar gene in rat suggested that this kinase may act as a downstream effector of Cdc42 in cytoskeletal reorganization.</p> <p>Alias Symbols: KIAA1124, MRCKB</p> <p>Protein Interaction Partner: LGR4, UBC, SP1, RIPK1, MAP2K5, CDC42, DCD, BRX1, RPL3,</p> <p>Protein Size: 1711</p>
Molecular Weight:	194 kDa
Gene ID:	9578
NCBI Accession:	NM_006035 , NP_006026
UniProt:	Q9Y5S2

Application Details

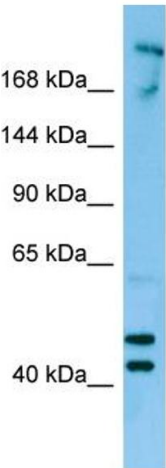
Application Notes:	Optimal working dilutions should be determined experimentally by the investigator.
Comment:	Antigen size: 1711 AA
Restrictions:	For Research Use only

Handling

Format:	Liquid
Concentration:	Lot specific
Buffer:	Liquid. Purified antibody supplied in 1x PBS buffer with 0.09 % (w/v) sodium azide and 2 % sucrose.
Preservative:	Sodium azide
Precaution of Use:	This product contains Sodium azide: a POISONOUS AND HAZARDOUS SUBSTANCE which should be handled by trained staff only.
Handling Advice:	Avoid repeated freeze-thaw cycles.
Storage:	-20 °C
Storage Comment:	For short term use, store at 2-8°C up to 1 week. For long term storage, store at -20°C in small aliquots to prevent freeze-thaw cycles.

Western Blotting

Image 1.



Host: Rabbit
Target Name: CDC42BPB
Sample Tissue: MCF7 Cell Lysate
Antibody Dilution: 1.0µg/ml