

Datasheet for ABIN2790151
anti-GPC2 antibody (C-Term)[Go to Product page](#)

1 Image

Overview

Quantity:	100 µL
Target:	GPC2
Binding Specificity:	C-Term
Reactivity:	Human, Mouse, Rat, Guinea Pig, Cow, Dog, Horse, Rabbit, Zebrafish (Danio rerio)
Host:	Rabbit
Clonality:	Polyclonal
Conjugate:	This GPC2 antibody is un-conjugated
Application:	Western Blotting (WB)

Product Details

Immunogen:	The immunogen is a synthetic peptide directed towards the C-terminal region of Human GPC2
Sequence:	GRLWSMVTEE ERPTTAAGTN LHRLVWELRE RLARMRGFWA RLSLTVCGDS
Predicted Reactivity:	Cow: 92%, Dog: 92%, Guinea Pig: 100%, Horse: 92%, Human: 100%, Mouse: 100%, Rabbit: 92%, Rat: 100%, Zebrafish: 92%
Characteristics:	This is a rabbit polyclonal antibody against GPC2. It was validated on Western Blot.
Purification:	Affinity Purified

Target Details

Target:	GPC2
Alternative Name:	GPC2 (GPC2 Products)

Target Details

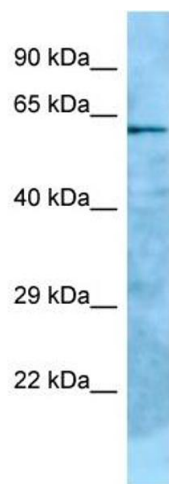
Background:	GPC2 is a cell surface proteoglycan that bears heparan sulfate. GPC2 may fulfill a function related to the motile behaviors of developing neurons. Alias Symbols: DKFZp547M109, FLJ38962 Protein Size: 579
Molecular Weight:	58 kDa
Gene ID:	221914
NCBI Accession:	NM_152742 , NP_689955
UniProt:	Q8N158
Pathways:	Glycosaminoglycan Metabolic Process

Application Details

Application Notes:	Optimal working dilutions should be determined experimentally by the investigator.
Comment:	Antigen size: 579 AA
Restrictions:	For Research Use only

Handling

Format:	Liquid
Concentration:	Lot specific
Buffer:	Liquid. Purified antibody supplied in 1x PBS buffer with 0.09 % (w/v) sodium azide and 2 % sucrose.
Preservative:	Sodium azide
Precaution of Use:	This product contains Sodium azide: a POISONOUS AND HAZARDOUS SUBSTANCE which should be handled by trained staff only.
Handling Advice:	Avoid repeated freeze-thaw cycles.
Storage:	-20 °C
Storage Comment:	For short term use, store at 2-8°C up to 1 week. For long term storage, store at -20°C in small aliquots to prevent freeze-thaw cycles.



Western Blotting

Image 1. WB Suggested Anti-GPC2 Antibody Titration: 1.0 ug/ml Positive Control: HCT15 Whole Cell