

Datasheet for ABIN2790170  
**anti-YRDC antibody (Middle Region)**[Go to Product page](#)

## 1 Image

## Overview

Quantity:	100 µL
Target:	YRDC
Binding Specificity:	Middle Region
Reactivity:	Human, Mouse, Rat, Cow, Dog, Guinea Pig, Horse, Rabbit, Zebrafish (Danio rerio)
Host:	Rabbit
Clonality:	Polyclonal
Conjugate:	This YRDC antibody is un-conjugated
Application:	Western Blotting (WB)

## Product Details

Immunogen:	The immunogen is a synthetic peptide directed towards the middle region of Human YRDC
Sequence:	VPEGLLKDLL PGPVTLVMER SEELNKDLNP FTPLVGIRIP DHAFMQDLAQ
Predicted Reactivity:	Cow: 100%, Dog: 83%, Guinea Pig: 100%, Horse: 100%, Human: 100%, Mouse: 100%, Rabbit: 100%, Rat: 100%, Zebrafish: 79%
Characteristics:	This is a rabbit polyclonal antibody against YRDC. It was validated on Western Blot.
Purification:	Affinity Purified

## Target Details

Target:	YRDC
Alternative Name:	YRDC ( <a href="#">YRDC Products</a> )

## Target Details

Background: YRDC may regulate the activity of some transporters.  
Alias Symbols: DRIP3, FLJ23476, FLJ26165, IRIP, RP11-109P14.4, SUA5  
Protein Interaction Partner: UBC, VPS29, TMSB10, UPP1, MEPCE, RBBP9,  
Protein Size: 279

Molecular Weight: 24 kDa

Gene ID: 79693

NCBI Accession: [NM\\_024640](#), [NP\\_078916](#)

UniProt: [Q86U90](#)

## Application Details

Application Notes: Optimal working dilutions should be determined experimentally by the investigator.

Comment: Antigen size: 279 AA

Restrictions: For Research Use only

## Handling

Format: Liquid

Concentration: Lot specific

Buffer: Liquid. Purified antibody supplied in 1x PBS buffer with 0.09 % (w/v) sodium azide and 2 % sucrose.

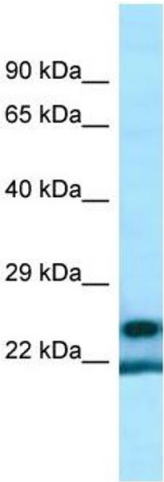
Preservative: Sodium azide

Precaution of Use: This product contains Sodium azide: a POISONOUS AND HAZARDOUS SUBSTANCE which should be handled by trained staff only.

Handling Advice: Avoid repeated freeze-thaw cycles.

Storage: -20 °C

Storage Comment: For short term use, store at 2-8°C up to 1 week. For long term storage, store at -20°C in small aliquots to prevent freeze-thaw cycles.



Western Blotting

**Image 1.** WB Suggested Anti-YRDC Antibody Titration: 1.0 ug/ml Positive Control: ACHN Whole Cell