



[Go to Product page](#)

Datasheet for ABIN2790174  
**anti-CH25H antibody (C-Term)**

1 Image

Overview

Quantity:	100 µL
Target:	CH25H
Binding Specificity:	C-Term
Reactivity:	Human, Mouse, Cow, Goat, Guinea Pig, Horse, Rabbit, Rat, Saccharomyces cerevisiae, Zebrafish (Danio rerio)
Host:	Rabbit
Clonality:	Polyclonal
Conjugate:	This CH25H antibody is un-conjugated
Application:	Western Blotting (WB)

Product Details

Immunogen:	The immunogen is a synthetic peptide directed towards the C-terminal region of Human CH25H
Sequence:	VTLLGCHPLT TLTFHVNIW LSVEDHSGYN FPWSTHRLVP FGWYGGVVHH
Predicted Reactivity:	Cow: 93%, Goat: 83%, Guinea Pig: 93%, Horse: 93%, Human: 100%, Mouse: 93%, Rabbit: 93%, Rat: 93%, Yeast: 75%, Zebrafish: 86%
Characteristics:	This is a rabbit polyclonal antibody against CH25H. It was validated on Western Blot.
Purification:	Affinity Purified

Target Details

Target:	CH25H
---------	-------

## Target Details

---

Alternative Name:	CH25H ( <a href="#">CH25H Products</a> )
Background:	<p>This is an intronless gene that is involved in cholesterol and lipid metabolism. The encoded protein is a membrane protein and contains clusters of histidine residues essential for catalytic activity. Unlike most other sterol hydroxylases, this enzyme is a member of a small family of enzymes that utilize diiron cofactors to catalyze the hydroxylation of hydrophobic substrates.</p> <p>Alias Symbols: C25H</p> <p>Protein Size: 272</p>
Molecular Weight:	32 kDa
Gene ID:	9023
NCBI Accession:	<a href="#">NM_003956</a> , <a href="#">NP_003947</a>
UniProt:	<a href="#">O95992</a>

## Application Details

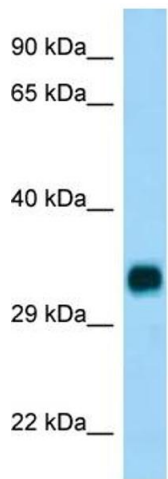
---

Application Notes:	Optimal working dilutions should be determined experimentally by the investigator.
Comment:	Antigen size: 272 AA
Restrictions:	For Research Use only

## Handling

---

Format:	Liquid
Concentration:	Lot specific
Buffer:	Liquid. Purified antibody supplied in 1x PBS buffer with 0.09 % (w/v) sodium azide and 2 % sucrose.
Preservative:	Sodium azide
Precaution of Use:	This product contains Sodium azide: a POISONOUS AND HAZARDOUS SUBSTANCE which should be handled by trained staff only.
Handling Advice:	Avoid repeated freeze-thaw cycles.
Storage:	-20 °C
Storage Comment:	For short term use, store at 2-8°C up to 1 week. For long term storage, store at -20°C in small aliquots to prevent freeze-thaw cycles.



Host: Rabbit  
Target Name: CH25H  
Sample Tissue: Fetal Brain Lysate  
Antibody Dilution: 1.0µg/ml

### Western Blotting

Image 1.