

Datasheet for ABIN2790177
anti-DPP7 antibody (Middle Region)[Go to Product page](#)

1 Image

Overview

Quantity:	100 µL
Target:	DPP7
Binding Specificity:	Middle Region
Reactivity:	Human, Cow, Dog
Host:	Rabbit
Clonality:	Polyclonal
Conjugate:	This DPP7 antibody is un-conjugated
Application:	Western Blotting (WB)

Product Details

Immunogen:	The immunogen is a synthetic peptide directed towards the middle region of Human DPP7
Sequence:	FRQIKDLFLQ GAYDTVRWEF GTCQPLSDEK DLTQLFMFAR NAFTVLAMMD
Predicted Reactivity:	Cow: 85%, Dog: 85%, Human: 100%
Characteristics:	This is a rabbit polyclonal antibody against DPP7. It was validated on Western Blot.
Purification:	Affinity Purified

Target Details

Target:	DPP7
Alternative Name:	DPP7 (DPP7 Products)
Background:	The protein encoded by this gene is a post-proline cleaving aminopeptidase expressed in

Target Details

quiescent lymphocytes. The resting lymphocytes are maintained through suppression of apoptosis, a state which is disrupted by inhibition of this novel serine protease. The enzyme has strong sequence homology with prolylcarboxypeptidase and is active at both acidic and neutral pH .

Alias Symbols: DPP2, DPPII, QPP

Protein Interaction Partner: UBC, SARNP, WDR61, RIC8A, PLCG1, CSTB, XRN1, FBXO6, MYCBP, SELENBP1,

Protein Size: 492

Molecular Weight: 52 kDa

Gene ID: 29952

NCBI Accession: [NM_013379](#), [NP_037511](#)

UniProt: [Q9UHL4](#)

Application Details

Application Notes: Optimal working dilutions should be determined experimentally by the investigator.

Comment: Antigen size: 492 AA

Restrictions: For Research Use only

Handling

Format: Liquid

Concentration: Lot specific

Buffer: Liquid. Purified antibody supplied in 1x PBS buffer with 0.09 % (w/v) sodium azide and 2 % sucrose.

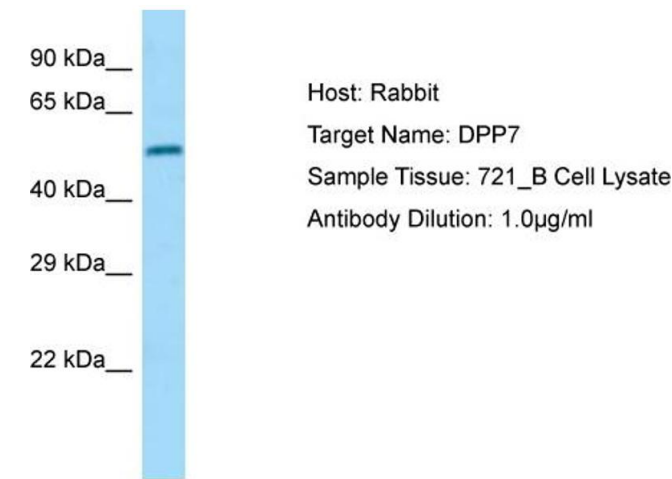
Preservative: Sodium azide

Precaution of Use: This product contains Sodium azide: a POISONOUS AND HAZARDOUS SUBSTANCE which should be handled by trained staff only.

Handling Advice: Avoid repeated freeze-thaw cycles.

Storage: -20 °C

Storage Comment: For short term use, store at 2-8°C up to 1 week. For long term storage, store at -20°C in small aliquots to prevent freeze-thaw cycles.



Western Blotting

Image 1.