

Datasheet for ABIN2790188
anti-IL22RA2 antibody (C-Term)



[Go to Product page](#)

1 Image

Overview

| | |
|----------------------|--|
| Quantity: | 100 µL |
| Target: | IL22RA2 |
| Binding Specificity: | C-Term |
| Reactivity: | Human, Dog |
| Host: | Rabbit |
| Clonality: | Polyclonal |
| Conjugate: | This IL22RA2 antibody is un-conjugated |
| Application: | Western Blotting (WB) |

Product Details

| | |
|-----------------------|--|
| Immunogen: | The immunogen is a synthetic peptide directed towards the C-terminal region of Human IL22RA2 |
| Sequence: | NITQVNGSLL VILHAPNLPY RYQKEKNVSI EDYYELLYRV FIINNSLEKE |
| Predicted Reactivity: | Dog: 86%, Human: 100% |
| Characteristics: | This is a rabbit polyclonal antibody against IL22RA2. It was validated on Western Blot. |
| Purification: | Affinity Purified |

Target Details

| | |
|-------------------|--|
| Target: | IL22RA2 |
| Alternative Name: | IL22RA2 (IL22RA2 Products) |

Target Details

| | |
|-------------|--|
| Background: | <p>The protein encoded by this gene is a soluble class II cytokine receptor. This protein has been shown to specifically bind to interleukin 22 (IL22), block the interaction of IL22 with its cell surface receptor, and thus inhibit IL22 activity. This protein functions as an IL22 antagonist, and may be important in the regulation of inflammatory response. Three alternatively spliced transcript variants encoding distinct isoforms have been described.</p> <p>Alias Symbols: CRF2-10, CRF2-S1, CRF2X, IL-22BP, MGC150509, MGC150510</p> <p>Protein Interaction Partner: IL22,</p> <p>Protein Size: 263</p> |
|-------------|--|

| | |
|-------------------|--------|
| Molecular Weight: | 26 kDa |
|-------------------|--------|

| | |
|----------|--------|
| Gene ID: | 116379 |
|----------|--------|

| | |
|-----------------|---|
| NCBI Accession: | NM_052962 , NP_443194 |
|-----------------|---|

| | |
|----------|------------------------|
| UniProt: | Q969J5 |
|----------|------------------------|

Application Details

| | |
|--------------------|--|
| Application Notes: | Optimal working dilutions should be determined experimentally by the investigator. |
|--------------------|--|

| | |
|----------|----------------------|
| Comment: | Antigen size: 263 AA |
|----------|----------------------|

| | |
|---------------|-----------------------|
| Restrictions: | For Research Use only |
|---------------|-----------------------|

Handling

| | |
|---------|--------|
| Format: | Liquid |
|---------|--------|

| | |
|----------------|--------------|
| Concentration: | Lot specific |
|----------------|--------------|

| | |
|---------|---|
| Buffer: | Liquid. Purified antibody supplied in 1x PBS buffer with 0.09 % (w/v) sodium azide and 2 % sucrose. |
|---------|---|

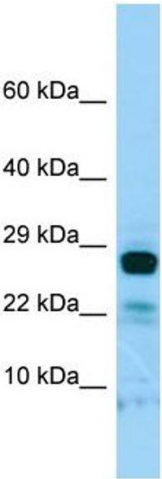
| | |
|---------------|--------------|
| Preservative: | Sodium azide |
|---------------|--------------|

| | |
|--------------------|--|
| Precaution of Use: | This product contains Sodium azide: a POISONOUS AND HAZARDOUS SUBSTANCE which should be handled by trained staff only. |
|--------------------|--|

| | |
|------------------|------------------------------------|
| Handling Advice: | Avoid repeated freeze-thaw cycles. |
|------------------|------------------------------------|

| | |
|----------|--------|
| Storage: | -20 °C |
|----------|--------|

| | |
|------------------|---|
| Storage Comment: | For short term use, store at 2-8°C up to 1 week. For long term storage, store at -20°C in small aliquots to prevent freeze-thaw cycles. |
|------------------|---|



Western Blotting

Image 1. WB Suggested Anti-IL22RA2 Antibody Titration:
1.0 ug/ml Positive Control: RPMI-8226 Whole Cell