

Datasheet for ABIN2790192
anti-RPS28 antibody (N-Term)

2 Images

[Go to Product page](#)

Overview

Quantity:	100 µL
Target:	RPS28
Binding Specificity:	N-Term
Reactivity:	Human, Mouse, Rat, Guinea Pig, Zebrafish (Danio rerio), Horse, Rabbit, Cow, Goat, Saccharomyces cerevisiae
Host:	Rabbit
Clonality:	Polyclonal
Conjugate:	This RPS28 antibody is un-conjugated
Application:	Immunohistochemistry (IHC), Western Blotting (WB)

Product Details

Immunogen:	The immunogen is a synthetic peptide directed towards the N-terminal region of Human RPS28
Sequence:	RTGSQGQCTQ VRVEFMDDTS RSIIRNVKGP VREGDVLTL ESEREARRLR
Predicted Reactivity:	Cow: 100%, Goat: 100%, Guinea Pig: 100%, Horse: 100%, Human: 100%, Mouse: 100%, Rabbit: 100%, Rat: 100%, Yeast: 93%, Zebrafish: 100%
Characteristics:	This is a rabbit polyclonal antibody against RPS28. It was validated on Western Blot.
Purification:	Affinity Purified

Target Details

Target:	RPS28
---------	-------

Target Details

Alternative Name:	RPS28 (RPS28 Products)
Background:	<p>Ribosomes, the organelles that catalyze protein synthesis, consist of a small 40S subunit and a large 60S subunit. Together these subunits are composed of 4 RNA species and approximately 80 structurally distinct proteins. This gene encodes a ribosomal protein that is a component of the 40S subunit. The protein belongs to the S28E family of ribosomal proteins. It is located in the cytoplasm. As is typical for genes encoding ribosomal proteins, there are multiple processed pseudogenes of this gene dispersed through the genome.</p> <p>Alias Symbols: S28</p> <p>Protein Interaction Partner: CCNDBP1, KRTAP2-4, NOTCH2NL, KRTAP10-3, KRTAP10-8, KRTAP10-7, UBC, MDM2, EED, EIF3D, RPS29, RPS27, RPS26, RPS25, RPS24, RPS23, RPS21, RPS20, RPS19, RPS18, RPS16, RPS15A, RPS14, RPS13, RPS12, RPS10, RPS9, RPS8, RPS7, RPS6, RPS5, RPS4X, RPS3A, RPS3, RPS2, P</p> <p>Protein Size: 69</p>
Molecular Weight:	8 kDa
Gene ID:	6234
NCBI Accession:	NM_001031 , NP_001022
UniProt:	P62857

Application Details

Application Notes:	Optimal working dilutions should be determined experimentally by the investigator.
Comment:	Antigen size: 69 AA
Restrictions:	For Research Use only

Handling

Format:	Liquid
Concentration:	Lot specific
Buffer:	Liquid. Purified antibody supplied in 1x PBS buffer with 0.09 % (w/v) sodium azide and 2 % sucrose.
Preservative:	Sodium azide
Precaution of Use:	This product contains Sodium azide: a POISONOUS AND HAZARDOUS SUBSTANCE which should be handled by trained staff only.

Handling

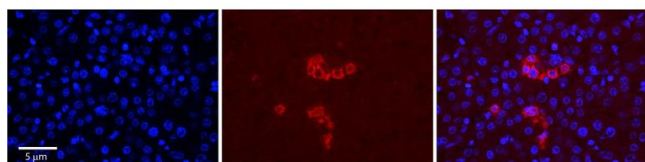
Handling Advice:	Avoid repeated freeze-thaw cycles.
Storage:	-20 °C
Storage Comment:	For short term use, store at 2-8°C up to 1 week. For long term storage, store at -20°C in small aliquots to prevent freeze-thaw cycles.

Images



Western Blotting

Image 1. WB Suggested Anti-RPS28 Antibody Titration: 1.0 ug/ml Positive Control: MDA-MB-435S Whole Cell RPS28 is strongly supported by BioGPS gene expression data to be expressed in Human MDA-MB435 cells



Immunohistochemistry

Image 2. Rabbit Anti-RPS28 Antibody Catalog Number: ARP65601_P050 Formalin Fixed Paraffin Embedded Tissue: Human Adult Liver Observed Staining: Cytoplasm in Kupffer cells only, strong signal, very low tissue distribution Primary Antibody Concentration: 1:100 Secondary Antibody: Donkey anti-Rabbit-Cy3 Secondary Antibody Concentration: 1:200 Magnification: 20X Exposure Time: 0.5 – 2.0 sec Protocol located in Reviews and Data.