

Datasheet for ABIN2790193
anti-SCUBE1 antibody (N-Term)[Go to Product page](#)

1 Image

Overview

Quantity:	100 µL
Target:	SCUBE1
Binding Specificity:	N-Term
Reactivity:	Human, Mouse, Rat, Zebrafish (Danio rerio), Guinea Pig, Horse, Rabbit, Cow, Dog
Host:	Rabbit
Clonality:	Polyclonal
Conjugate:	This SCUBE1 antibody is un-conjugated
Application:	Western Blotting (WB)

Product Details

Immunogen:	The immunogen is a synthetic peptide directed towards the N-terminal region of Human SCUBE1
Sequence:	PGYKGEGKQC EDIDECENDY YNGGCVHECI NIPGNYRCTC FDGFMLAHDG
Predicted Reactivity:	Cow: 93%, Dog: 93%, Guinea Pig: 93%, Horse: 93%, Human: 100%, Mouse: 93%, Rabbit: 93%, Rat: 100%, Zebrafish: 86%
Characteristics:	This is a rabbit polyclonal antibody against SCUBE1. It was validated on Western Blot.
Purification:	Affinity Purified

Target Details

Target:	SCUBE1
---------	--------

Target Details

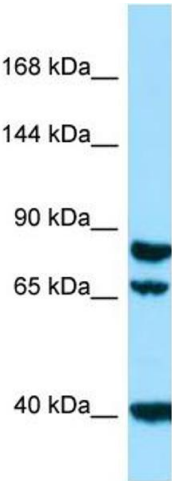
Alternative Name:	SCUBE1 (SCUBE1 Products)
Background:	<p>This gene encodes a cell surface glycoprotein that is a member of the SCUBE (signal peptide, CUB domain, EGF (epidermal growth factor)-like protein) family. Family members have an amino-terminal signal peptide, nine copies of EGF-like repeats and a CUB domain at the carboxyl terminus. This protein is expressed in platelets and endothelial cells and may play an important role in vascular biology.</p> <p>Alias Symbols: -</p> <p>Protein Interaction Partner: SCUBE3, SCUBE2, SCUBE1,</p> <p>Protein Size: 347</p>
Molecular Weight:	38 kDa
Gene ID:	80274
NCBI Accession:	NM_173050 , NP_766638
UniProt:	Q86T16

Application Details

Application Notes:	Optimal working dilution should be determined by the investigator.
Restrictions:	For Research Use only

Handling

Format:	Liquid
Concentration:	1 mg/mL
Buffer:	Liquid. Purified antibody supplied in 1x PBS buffer with 0.09 % (w/v) sodium azide and 2 % sucrose.
Preservative:	Sodium azide
Precaution of Use:	This product contains Sodium azide: a POISONOUS AND HAZARDOUS SUBSTANCE which should be handled by trained staff only.
Handling Advice:	Avoid repeat freeze-thaw cycles.
Storage:	-20 °C
Storage Comment:	For short term use, store at 2-8°C up to 1 week. For long term storage, store at -20°C in small aliquots to prevent freeze-thaw cycles.



Western Blotting

Image 1.