

Datasheet for ABIN2790194
anti-SCUBE1 antibody (C-Term)[Go to Product page](#)

1 Image

Overview

Quantity:	100 µL
Target:	SCUBE1
Binding Specificity:	C-Term
Reactivity:	Human, Mouse, Rat, Zebrafish (Danio rerio), Guinea Pig, Horse, Rabbit, Cow, Dog
Host:	Rabbit
Clonality:	Polyclonal
Conjugate:	This SCUBE1 antibody is un-conjugated
Application:	Western Blotting (WB)

Product Details

Immunogen:	The immunogen is a synthetic peptide directed towards the C-terminal region of Mouse Scube1
Sequence:	NCHVTFVTLK CDSSKKRRRG RKSPSKEVSH ITAEFEVEMK VDEASGTCEA
Predicted Reactivity:	Cow: 100%, Dog: 100%, Guinea Pig: 100%, Horse: 100%, Human: 100%, Mouse: 100%, Rabbit: 100%, Rat: 100%, Zebrafish: 100%
Characteristics:	This is a rabbit polyclonal antibody against Scube1. It was validated on Western Blot.
Purification:	Affinity Purified

Target Details

Target:	SCUBE1
Alternative Name:	Scube1 (SCUBE1 Products)

Target Details

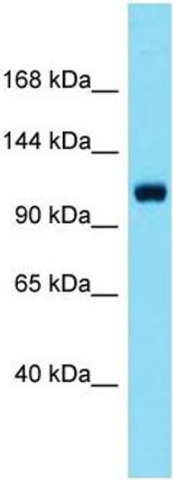
Background:	Scube1 could function as an adhesive molecule and its matrix bound and soluble fragments may play a critical role in vascular biology. Alias Symbols: 7330410C13Rik, A630023E24Rik, AI604862 Protein Size: 988
Molecular Weight:	108 kDa
Gene ID:	64706
NCBI Accession:	NM_022723 , NP_073560

Application Details

Application Notes:	Optimal working dilutions should be determined experimentally by the investigator.
Comment:	Antigen size: 988 AA
Restrictions:	For Research Use only

Handling

Format:	Liquid
Concentration:	Lot specific
Buffer:	Liquid. Purified antibody supplied in 1x PBS buffer with 0.09 % (w/v) sodium azide and 2 % sucrose.
Preservative:	Sodium azide
Precaution of Use:	This product contains Sodium azide: a POISONOUS AND HAZARDOUS SUBSTANCE which should be handled by trained staff only.
Handling Advice:	Avoid repeated freeze-thaw cycles.
Storage:	-20 °C
Storage Comment:	For short term use, store at 2-8°C up to 1 week. For long term storage, store at -20°C in small aliquots to prevent freeze-thaw cycles.



Western Blotting

Image 1. Host: Rabbit

Target Name: Scube1

Sample Tissue: Mouse Liver lysates

Antibody Dilution: 1.0 µg/mL