



[Go to Product page](#)

Datasheet for ABIN2790211
anti-EIF2B2 antibody (Middle Region)

2 Images

Overview

Quantity:	100 µL
Target:	EIF2B2
Binding Specificity:	Middle Region
Reactivity:	Human, Mouse, Rat, Guinea Pig, Horse, Cow, Dog, Rabbit, Saccharomyces cerevisiae, Zebrafish (Danio rerio)
Host:	Rabbit
Clonality:	Polyclonal
Conjugate:	This EIF2B2 antibody is un-conjugated
Application:	Western Blotting (WB), Immunohistochemistry (IHC)

Product Details

Immunogen:	The immunogen is a synthetic peptide directed towards the middle region of Human EIF2B2
Sequence:	EGTMENIAAQ ALEHIHSNEV IMTIGFSRTV EAFLKEAARK RKFHVIVAEC
Predicted Reactivity:	Cow: 93%, Dog: 93%, Guinea Pig: 100%, Horse: 100%, Human: 100%, Mouse: 100%, Rabbit: 93%, Rat: 100%, Yeast: 93%, Zebrafish: 93%
Characteristics:	This is a rabbit polyclonal antibody against EIF2B2. It was validated on Western Blot.
Purification:	Affinity Purified

Target Details

Target:	EIF2B2
---------	--------

Target Details

Alternative Name:	EIF2B2 (EIF2B2 Products)
Background:	<p>This gene encodes the beta subunit of eukaryotic initiation factor-2B (EIF2B). EIF2B is involved in protein synthesis and exchanges GDP and GTP for its activation and deactivation.</p> <p>Alias Symbols: EIF-2Bbeta, EIF2B</p> <p>Protein Interaction Partner: C9orf72, MRFAP1L1, EIF2B4, UBC, SUMO1, NEDD8, WNK1, C14orf166, RTCB, EIF3K, DIMT1, NELFB, EDC4, IGF2BP3, EIF2B3, YBX3, SPTBN1, RFC4, QARS, PTBP1, YBX1, NMT1, HNRNPM, MRE11A, ILF2, HNRNPU, HNRNPA2B1, FKBP3, DHX9, DDX1, ABCF1, EGFR, EIF2B1, CSNK2A2, EIF2B5,</p> <p>Protein Size: 351</p>
Molecular Weight:	39 kDa
Gene ID:	8892
NCBI Accession:	NM_014239 , NP_055054
UniProt:	P49770
Pathways:	Methionine Biosynthetic Process

Application Details

Application Notes:	Optimal working dilutions should be determined experimentally by the investigator.
Comment:	Antigen size: 351 AA
Restrictions:	For Research Use only

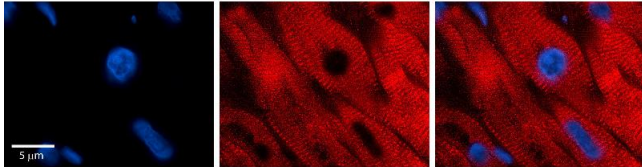
Handling

Format:	Liquid
Concentration:	Lot specific
Buffer:	Liquid. Purified antibody supplied in 1x PBS buffer with 0.09 % (w/v) sodium azide and 2 % sucrose.
Preservative:	Sodium azide
Precaution of Use:	This product contains Sodium azide: a POISONOUS AND HAZARDOUS SUBSTANCE which should be handled by trained staff only.
Handling Advice:	Avoid repeated freeze-thaw cycles.
Storage:	-20 °C

Handling

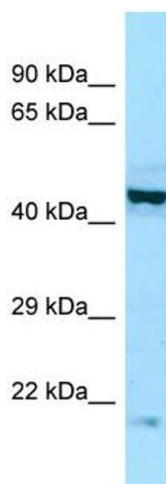
Storage Comment: For short term use, store at 2-8°C up to 1 week. For long term storage, store at -20°C in small aliquots to prevent freeze-thaw cycles.

Images



Immunohistochemistry

Image 1. Rabbit Anti-EIF2B2 Antibody Catalog Number: ARP65664_P050 Formalin Fixed Paraffin Embedded Tissue: Human heart Tissue Observed Staining: Cytoplasmic near intercalated discs Primary Antibody Concentration: 1:100 Other Working Concentrations: N/A Secondary Antibody: Donkey anti-Rabbit-Cy3 Secondary Antibody Concentration: 1:200 Magnification: 20X Exposure Time: 0.5 - 2.0 sec



Western Blotting

Image 2. WB Suggested Anti-EIF2B2 Antibody Titration: 1.0 ug/ml Positive Control: RPMI-8226 Whole Cell