

Datasheet for ABIN2790216
anti-LYPD3 antibody (C-Term)[Go to Product page](#)

2 Images

Overview

Quantity:	100 µL
Target:	LYPD3
Binding Specificity:	C-Term
Reactivity:	Human
Host:	Rabbit
Clonality:	Polyclonal
Conjugate:	This LYPD3 antibody is un-conjugated
Application:	Western Blotting (WB)

Product Details

Immunogen:	The immunogen is a synthetic peptide directed towards the C-terminal region of Human LYPD3
Sequence:	SRDEEPRLTG GAAGHQDRSN SGQYPAKGGP QQPHNKGCV A PTAGLAALLL
Predicted Reactivity:	Human: 100%
Characteristics:	This is a rabbit polyclonal antibody against LYPD3. It was validated on Western Blot.
Purification:	Affinity Purified

Target Details

Target:	LYPD3
Alternative Name:	LYPD3 (LYPD3 Products)
Background:	LYPD3 supports cell migration. It may be involved in urothelial cell-matrix interactions and

Target Details

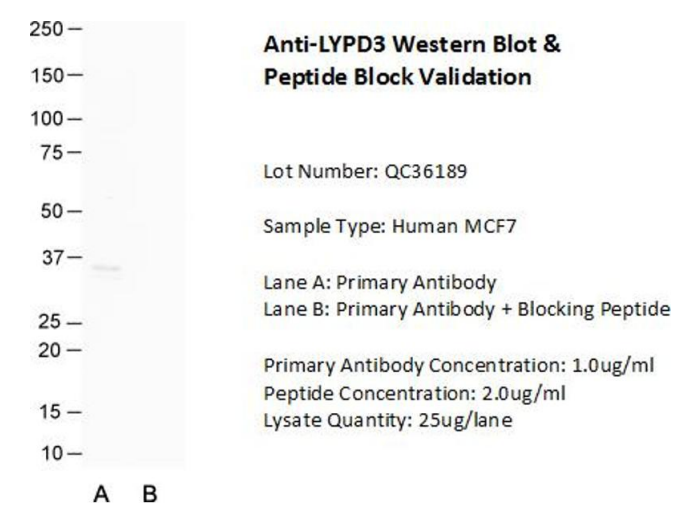
	tumor progression. Alias Symbols: C4.4A Protein Interaction Partner: AGR3, AGR2, Trim69, CTRB1, Protein Size: 346
Molecular Weight:	36 kDa
Gene ID:	27076
NCBI Accession:	NM_014400 , NP_055215
UniProt:	O95274

Application Details

Application Notes:	Optimal working dilutions should be determined experimentally by the investigator.
Comment:	Antigen size: 346 AA
Restrictions:	For Research Use only

Handling

Format:	Liquid
Concentration:	Lot specific
Buffer:	Liquid. Purified antibody supplied in 1x PBS buffer with 0.09 % (w/v) sodium azide and 2 % sucrose.
Preservative:	Sodium azide
Precaution of Use:	This product contains Sodium azide: a POISONOUS AND HAZARDOUS SUBSTANCE which should be handled by trained staff only.
Handling Advice:	Avoid repeated freeze-thaw cycles.
Storage:	-20 °C
Storage Comment:	For short term use, store at 2-8°C up to 1 week. For long term storage, store at -20°C in small aliquots to prevent freeze-thaw cycles.



Western Blotting

Image 1. Host: Rabbit Target Name: LYPD3 Sample Type: Human MCF7 Lane A: Primary Antibody Lane B: Primary Antibody + Blocking Peptide Primary Antibody Concentration: 1.0 ug/ml Peptide Concentration: 2.0 ug/ml Lysate Quantity: 25 ug/lane

Western Blotting

Image 2. WB Suggested Anti-LYPD3 Antibody Titration: 1.0 ug/ml Positive Control: Hela Whole Cell

