

Datasheet for ABIN2790218
anti-MOB1A antibody (C-Term)



[Go to Product page](#)

1 Image

Overview

Quantity:	100 µL
Target:	MOB1A (MOBKL1B)
Binding Specificity:	C-Term
Reactivity:	Human, Mouse, Rat, Rabbit, Cow, Guinea Pig, Horse, Zebrafish (Danio rerio), Dog
Host:	Rabbit
Clonality:	Polyclonal
Conjugate:	This MOB1A antibody is un-conjugated
Application:	Western Blotting (WB)

Product Details

Immunogen:	The immunogen is a synthetic peptide directed towards the C-terminal region of Human MOB1A
Sequence:	FDSVMQLQEE AHLNTSFKHF IFFVQEFNLI DRRELAPLQE LIEKLGSKDR
Predicted Reactivity:	Cow: 100%, Dog: 100%, Guinea Pig: 100%, Horse: 100%, Human: 100%, Mouse: 100%, Rabbit: 100%, Rat: 100%, Zebrafish: 93%
Characteristics:	This is a rabbit polyclonal antibody against MOB1A. It was validated on Western Blot.
Purification:	Affinity Purified

Target Details

Target:	MOB1A (MOBKL1B)
---------	-----------------

Target Details

Alternative Name:	MOB1A (MOBKL1B Products)
Background:	<p>MOB1A is an activator of LATS1/2 in the Hippo signaling pathway which plays a pivotal role in organ size control and tumor suppression by restricting proliferation and promoting apoptosis. The core of this pathway is composed of a kinase cascade wherein STK3/MST2 and STK4/MST1, in complex with its regulatory protein SAV1, phosphorylates and activates LATS1/2 in complex with its regulatory protein MOB1, which in turn phosphorylates and inactivates YAP1 oncoprotein and WWTR1/TAZ. Phosphorylation of YAP1 by LATS1/2 inhibits its translocation into the nucleus to regulate cellular genes important for cell proliferation, cell death, and cell migration. MOB1A stimulates the kinase activity of STK38 and STK38L. MOB1A acts cooperatively with STK3/MST2 to activate STK38.</p> <p>Alias Symbols: C2orf6, FLJ10788, FLJ11595, MATS1, MOB1, MOBKL1B, Mob4B, MOBKL1B</p> <p>Protein Interaction Partner: FAM9B, CMTM3, SEPT3, FAM118A, KANK2, TDO2, UBC, HECW2, ANKRD52, AMOT, ANKRD44, DOCK7, LRCH3, RASSF5, DOCK8, MOB2, SAV1, LRCH2, DOCK6, THOC2, PPP6R3, CRLF3, IPO11, LATS2, ANKRD28, LRCH1, STK38L, PPP6R1, RASSF2, PPP6R2, LATS1, YWHAH, STK4, STK3, PTPN14, PPP</p> <p>Protein Size: 216</p>
Molecular Weight:	25 kDa
Gene ID:	55233
NCBI Accession:	NM_018221 , NP_060691
UniProt:	Q9H8S9

Application Details

Application Notes:	Optimal working dilutions should be determined experimentally by the investigator.
Comment:	Antigen size: 216 AA
Restrictions:	For Research Use only

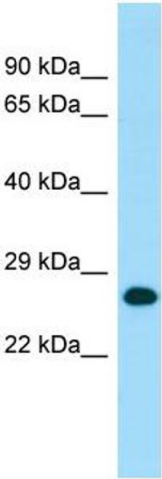
Handling

Format:	Liquid
Concentration:	Lot specific
Buffer:	Liquid. Purified antibody supplied in 1x PBS buffer with 0.09 % (w/v) sodium azide and 2 % sucrose.

Handling

Preservative:	Sodium azide
Precaution of Use:	This product contains Sodium azide: a POISONOUS AND HAZARDOUS SUBSTANCE which should be handled by trained staff only.
Handling Advice:	Avoid repeated freeze-thaw cycles.
Storage:	-20 °C
Storage Comment:	For short term use, store at 2-8°C up to 1 week. For long term storage, store at -20°C in small aliquots to prevent freeze-thaw cycles.

Images



Western Blotting

Image 1. WB Suggested Anti-MOB1A Antibody Titration: 1.0 ug/ml Positive Control: Fetal Heart