

Datasheet for ABIN2790220
anti-OST4 antibody (C-Term)[Go to Product page](#)

1 Image

Overview

Quantity:	100 µL
Target:	OST4
Binding Specificity:	C-Term
Reactivity:	Dog, Human, Mouse, Rat, Zebrafish (Danio rerio)
Host:	Rabbit
Clonality:	Polyclonal
Conjugate:	This OST4 antibody is un-conjugated
Application:	Western Blotting (WB)

Product Details

Immunogen:	The immunogen is a synthetic peptide directed towards the C-terminal region of Human OST4
Sequence:	MITDVQLAIF ANMLGVSLFL LVVLYHYVAV NNPKKQE
Predicted Reactivity:	Dog: 83%, Human: 100%, Mouse: 100%, Rat: 100%, Zebrafish: 93%
Characteristics:	This is a rabbit polyclonal antibody against OST4. It was validated on Western Blot.
Purification:	Affinity Purified

Target Details

Target:	OST4
Alternative Name:	OST4 (OST4 Products)
Background:	OST4 may be involved in N-glycosylation through its association with N-oligosaccharyl

Target Details

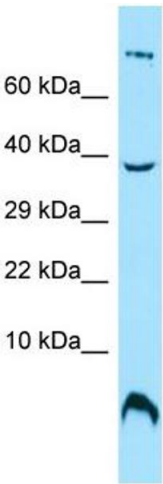
	transferase. Alias Symbols: DKFZp586A0722 Protein Interaction Partner: STT3B, SEC61B, RPN1, STT3A, Protein Size: 37
Molecular Weight:	4 kDa
Gene ID:	100128731
NCBI Accession:	NM_001134693 , NP_001128165
UniProt:	P0C6T2

Application Details

Application Notes:	Optimal working dilutions should be determined experimentally by the investigator.
Comment:	Antigen size: 37 AA
Restrictions:	For Research Use only

Handling

Format:	Liquid
Concentration:	Lot specific
Buffer:	Liquid. Purified antibody supplied in 1x PBS buffer with 0.09 % (w/v) sodium azide and 2 % sucrose.
Preservative:	Sodium azide
Precaution of Use:	This product contains Sodium azide: a POISONOUS AND HAZARDOUS SUBSTANCE which should be handled by trained staff only.
Handling Advice:	Avoid repeated freeze-thaw cycles.
Storage:	-20 °C
Storage Comment:	For short term use, store at 2-8°C up to 1 week. For long term storage, store at -20°C in small aliquots to prevent freeze-thaw cycles.



Western Blotting

Image 1. WB Suggested Anti-OST4 Antibody Titration: 1.0 ug/ml Positive Control: MCF7 Whole Cell