

Datasheet for ABIN2790223  
**anti-PRB3 antibody (Middle Region)**[Go to Product page](#)

## 1 Image

## Overview

Quantity:	100 µL
Target:	PRB3
Binding Specificity:	Middle Region
Reactivity:	Human, Rat
Host:	Rabbit
Clonality:	Polyclonal
Conjugate:	This PRB3 antibody is un-conjugated
Application:	Western Blotting (WB)

## Product Details

Immunogen:	The immunogen is a synthetic peptide directed towards the middle region of Human PRB3
Sequence:	PGKPEGPPPQ GGNQSQGPPP RPGKPEGPPS QGGNKPQGPP PHPGKPQGPP
Predicted Reactivity:	Human: 100%, Rat: 83%
Characteristics:	This is a rabbit polyclonal antibody against PRB3. It was validated on Western Blot.
Purification:	Affinity Purified

## Target Details

Target:	PRB3
Alternative Name:	PRB3 ( <a href="#">PRB3 Products</a> )
Background:	The protein encoded by this gene is a proline-rich salivary protein. It is a major constituent of

## Target Details

parotid saliva. This protein is proposed to act as a bacterial receptor. This gene and five other genes that also encode salivary proline-rich proteins (PRPs), as well as a gene encoding a lacrimal gland PRP, form a PRP gene cluster in the chromosomal 12p13 region.

Alias Symbols: G1, MGC116862, MGC116863, MGC116864, PRG

Protein Interaction Partner: ALB,

Protein Size: 309

Molecular Weight: 29 kDa

Gene ID: 5544

NCBI Accession: [NM\\_006249](#), [NP\\_006240](#)

UniProt: [Q04118](#)

## Application Details

Application Notes: Optimal working dilutions should be determined experimentally by the investigator.

Comment: Antigen size: 309 AA

Restrictions: For Research Use only

## Handling

Format: Liquid

Concentration: Lot specific

Buffer: Liquid. Purified antibody supplied in 1x PBS buffer with 0.09 % (w/v) sodium azide and 2 % sucrose.

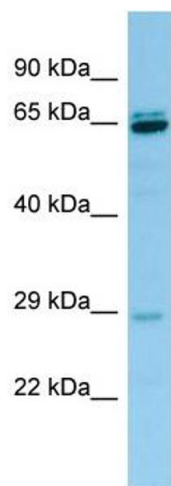
Preservative: Sodium azide

Precaution of Use: This product contains Sodium azide: a POISONOUS AND HAZARDOUS SUBSTANCE which should be handled by trained staff only.

Handling Advice: Avoid repeated freeze-thaw cycles.

Storage: -20 °C

Storage Comment: For short term use, store at 2-8°C up to 1 week. For long term storage, store at -20°C in small aliquots to prevent freeze-thaw cycles.



Western Blotting

**Image 1.** WB Suggested Anti-PRB3 Antibody Titration: 1.0 ug/ml Positive Control: Hela Whole Cell