

Datasheet for ABIN2790224
anti-PTGES2 antibody (N-Term)



[Go to Product page](#)

1 Image

Overview

Quantity:	100 µL
Target:	PTGES2
Binding Specificity:	N-Term
Reactivity:	Human, Mouse, Rat, Dog, Cow, Pig
Host:	Rabbit
Clonality:	Polyclonal
Conjugate:	This PTGES2 antibody is un-conjugated
Application:	Western Blotting (WB)

Product Details

Immunogen:	The immunogen is a synthetic peptide directed towards the N-terminal region of Human PTGES2
Sequence:	KEVTEFGNKY WLMLNEKEAQ QVYGGKEART EEMKWRQWAD DWLVHLISPN
Predicted Reactivity:	Cow: 79%, Dog: 79%, Human: 100%, Mouse: 86%, Pig: 79%, Rat: 79%
Characteristics:	This is a rabbit polyclonal antibody against PTGES2. It was validated on Western Blot.
Purification:	Affinity Purified

Target Details

Target:	PTGES2
Alternative Name:	PTGES2 (PTGES2 Products)

Target Details

Background:	<p>The protein encoded by this gene is a membrane-associated prostaglandin E synthase, which catalyzes the conversion of prostaglandin H2 to prostaglandin E2. This protein also has been shown to activate the transcription regulated by a gamma-interferon-activated transcription element (GATE). Multiple transcript variants have been found for this gene.</p> <p>Alias Symbols: C9orf15, FLJ14038, GBF1, MGC11289, PGES2, mPGES-2, GBF-1</p> <p>Protein Interaction Partner: C1orf189, SUMO2, PTGES2, HTT, UBC, UQCR11, MYC, H2AFX, EXOSC10, PTGFR, CEBPB,</p> <p>Protein Size: 186</p>
Molecular Weight:	21 kDa
Gene ID:	80142
NCBI Accession:	NM_198938 , NP_945176
UniProt:	A6NHH0
Pathways:	Interferon-gamma Pathway , Cell RedoxHomeostasis , SARS-CoV-2 Protein Interactome

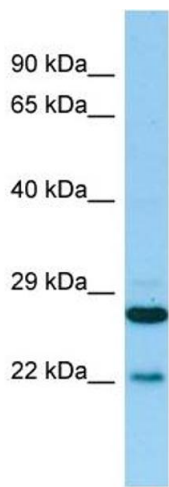
Application Details

Application Notes:	Optimal working dilutions should be determined experimentally by the investigator.
Comment:	Antigen size: 186 AA
Restrictions:	For Research Use only

Handling

Format:	Liquid
Concentration:	Lot specific
Buffer:	Liquid. Purified antibody supplied in 1x PBS buffer with 0.09 % (w/v) sodium azide and 2 % sucrose.
Preservative:	Sodium azide
Precaution of Use:	This product contains Sodium azide: a POISONOUS AND HAZARDOUS SUBSTANCE which should be handled by trained staff only.
Handling Advice:	Avoid repeated freeze-thaw cycles.
Storage:	-20 °C
Storage Comment:	For short term use, store at 2-8°C up to 1 week. For long term storage, store at -20°C in small

aliquots to prevent freeze-thaw cycles.



Western Blotting

Image 1. WB Suggested Anti-PTGES2 Antibody Titration: 1.0 ug/ml Positive Control: 721_B Whole Cell PTGES2 is supported by BioGPS gene expression data to be expressed in 721_B