

Datasheet for ABIN2790227
anti-RPL28 antibody (N-Term)



[Go to Product page](#)

1 Image

Overview

Quantity:	100 µL
Target:	RPL28
Binding Specificity:	N-Term
Reactivity:	Human, Mouse, Rat, Cow, Dog, Guinea Pig, Horse, Rabbit, Zebrafish (Danio rerio)
Host:	Rabbit
Clonality:	Polyclonal
Conjugate:	This RPL28 antibody is un-conjugated
Application:	Western Blotting (WB)

Product Details

Immunogen:	The immunogen is a synthetic peptide directed towards the N-terminal region of Human RPL28
Sequence:	SSFLIKRNLKQ TYSTEPNNLK ARNSFRYNGL IHRKTVGVPEP AADGKGWVVV
Predicted Reactivity:	Cow: 100%, Dog: 100%, Guinea Pig: 100%, Horse: 100%, Human: 100%, Mouse: 100%, Rabbit: 100%, Rat: 100%, Zebrafish: 100%
Characteristics:	This is a rabbit polyclonal antibody against RPL28. It was validated on Western Blot.
Purification:	Affinity Purified

Target Details

Target:	RPL28
Alternative Name:	RPL28 (RPL28 Products)

Target Details

Background:	<p>Ribosomes, the organelles that catalyze protein synthesis, consist of a small 40S subunit and a large 60S subunit. Together these subunits are composed of 4 RNA species and approximately 80 structurally distinct proteins. This gene encodes a ribosomal protein that is a component of the 60S subunit. The protein belongs to the L28E family of ribosomal proteins. It is located in the cytoplasm. Variable expression of this gene in colorectal cancers compared to adjacent normal tissues has been observed, although no correlation between the level of expression and the severity of the disease has been found. As is typical for genes encoding ribosomal proteins, there are multiple processed pseudogenes of this gene dispersed through the genome.</p> <p>Alias Symbols: FLJ43307</p> <p>Protein Interaction Partner: PCSK9, CCNDBP1, UBC, TP53, GRSF1, RNF2, RPS29, RPS23, RPS19, RPS18, RPS10, RPS3A, RPS3, RPS2, RPL8, GTF2I, FBXO6, TARDBP, PAN2, UBL4A, MAP2K5, SMAD4, ITGA4, FN1, PA2G4, MAGOH, EIF4A3, ESR1, CAND1, COPS5, CUL1, CUL2, CDK2, TDRD3, ARRB2, SUMO1, DCC, TMEM230</p> <p>Protein Size: 169</p>
-------------	---

Molecular Weight:	19 kDa
-------------------	--------

Gene ID:	6158
----------	------

NCBI Accession:	NM_001136135 , NP_001129607
-----------------	---

UniProt:	E9PB24
----------	------------------------

Application Details

Application Notes:	Optimal working dilutions should be determined experimentally by the investigator.
--------------------	--

Comment:	Antigen size: 169 AA
----------	----------------------

Restrictions:	For Research Use only
---------------	-----------------------

Handling

Format:	Liquid
---------	--------

Concentration:	Lot specific
----------------	--------------

Buffer:	Liquid. Purified antibody supplied in 1x PBS buffer with 0.09 % (w/v) sodium azide and 2 % sucrose.
---------	---

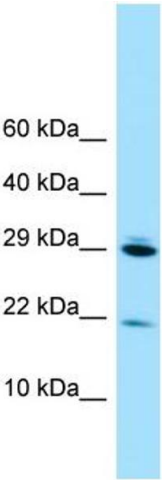
Preservative:	Sodium azide
---------------	--------------

Precaution of Use:	This product contains Sodium azide: a POISONOUS AND HAZARDOUS SUBSTANCE which
--------------------	---

Handling

	should be handled by trained staff only.
Handling Advice:	Avoid repeated freeze-thaw cycles.
Storage:	-20 °C
Storage Comment:	For short term use, store at 2-8°C up to 1 week. For long term storage, store at -20°C in small aliquots to prevent freeze-thaw cycles.

Images



Western Blotting

Image 1. WB Suggested Anti-RPL28 Antibody Titration: 1.0 ug/ml Positive Control: 293T Whole Cell RPL28 is supported by BioGPS gene expression data to be expressed in HEK293T