



[Go to Product page](#)

Datasheet for ABIN2790230
anti-SLC25A2 antibody (C-Term)

1 Image

Overview

Quantity:	100 µL
Target:	SLC25A2
Binding Specificity:	C-Term
Reactivity:	Human, Mouse, Rat, Pig, Rabbit, Cow, Horse, Dog, Sheep, Guinea Pig
Host:	Rabbit
Clonality:	Polyclonal
Conjugate:	This SLC25A2 antibody is un-conjugated
Application:	Western Blotting (WB)

Product Details

Immunogen:	The immunogen is a synthetic peptide directed towards the C-terminal region of Human SLC25A2
Sequence:	VPGYFFFFGG YELSRFFAS GRSKDELGPV HLMLSGGVAG ICLWLWVFPV
Predicted Reactivity:	Cow: 100%, Dog: 100%, Guinea Pig: 93%, Horse: 100%, Human: 100%, Mouse: 100%, Pig: 100%, Rabbit: 100%, Rat: 100%, Sheep: 100%
Characteristics:	This is a rabbit polyclonal antibody against SLC25A2. It was validated on Western Blot.
Purification:	Affinity Purified

Target Details

Target:	SLC25A2
---------	---------

Target Details

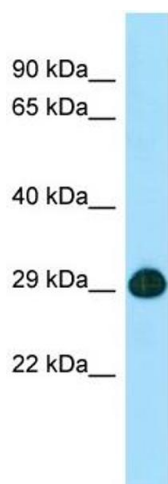
Alternative Name:	SLC25A2 (SLC25A2 Products)
Background:	<p>SLC25A2 is located between the protocadherin beta and gamma gene clusters on chromosome 5, this intronless gene encodes a protein that is highly similar to an ornithine transporter localized in the mitochondrial inner membrane. The encoded protein most likely plays a role in metabolism as a mitochondrial transport protein.</p> <p>Alias Symbols: MGC119151, MGC119153, ORC2, ORNT2</p> <p>Protein Size: 301</p>
Molecular Weight:	32 kDa
Gene ID:	83884
NCBI Accession:	NM_031947 , NP_114153
UniProt:	Q9BXI2

Application Details

Application Notes:	Optimal working dilutions should be determined experimentally by the investigator.
Comment:	Antigen size: 301 AA
Restrictions:	For Research Use only

Handling

Format:	Liquid
Concentration:	Lot specific
Buffer:	Liquid. Purified antibody supplied in 1x PBS buffer with 0.09 % (w/v) sodium azide and 2 % sucrose.
Preservative:	Sodium azide
Precaution of Use:	This product contains Sodium azide: a POISONOUS AND HAZARDOUS SUBSTANCE which should be handled by trained staff only.
Handling Advice:	Avoid repeated freeze-thaw cycles.
Storage:	-20 °C
Storage Comment:	For short term use, store at 2-8°C up to 1 week. For long term storage, store at -20°C in small aliquots to prevent freeze-thaw cycles.



Western Blotting

Image 1. WB Suggested Anti-SLC25A2 Antibody Titration:
1.0 ug/ml Positive Control: Fetal Heart