



[Go to Product page](#)

Datasheet for ABIN2790231  
**anti-SPAG1 antibody (N-Term)**

1 Image

### Overview

Quantity:	100 µL
Target:	SPAG1
Binding Specificity:	N-Term
Reactivity:	Human, Dog
Host:	Rabbit
Clonality:	Polyclonal
Conjugate:	This SPAG1 antibody is un-conjugated
Application:	Western Blotting (WB)

### Product Details

Immunogen:	The immunogen is a synthetic peptide directed towards the N-terminal region of human SPAG1
Sequence:	LHVGKEKYSK RPTKKKTPRD YAEWDKFDVE KECLKIDEDY KEKTVIDKSH
Predicted Reactivity:	Dog: 85%, Human: 100%
Characteristics:	This is a rabbit polyclonal antibody against SPAG1. It was validated on Western Blot.
Purification:	Affinity Purified

### Target Details

Target:	SPAG1
Alternative Name:	SPAG1 ( <a href="#">SPAG1 Products</a> )
Background:	The correlation of anti-sperm antibodies with cases of unexplained infertility implicates a role

## Target Details

---

for these antibodies in blocking fertilization. Improved diagnosis and treatment of immunologic infertility, as well as identification of proteins for targeted contraception, are dependent on the identification and characterization of relevant sperm antigens. The protein expressed by this gene is recognized by anti-sperm agglutinating antibodies from an infertile woman.

Furthermore, immunization of female rats with the recombinant human protein reduced fertility.

This protein localizes to the plasma membrane of germ cells in the testis and to the post-acrosomal plasma membrane of mature spermatozoa. Recombinant polypeptide binds GTP and exhibits GTPase activity. Thus, this protein may regulate GTP signal transduction pathways involved in spermatogenesis and fertilization. Two transcript variants of this gene encode the same protein.

Alias Symbols: SP75, TPIS, CT140, CILD28, HSD-3.8, HEL-S-268

Protein Size: 416

---

Molecular Weight: 45 kDa

---

Gene ID: 6674

---

NCBI Accession: [NM\\_003114](#), [NP\\_003105](#)

---

UniProt: [G3XAM3](#)

## Application Details

---

Application Notes: Optimal working dilution should be determined by the investigator.

Restrictions: For Research Use only

## Handling

---

Format: Liquid

Concentration: 1 mg/mL

Buffer: Liquid. Purified antibody supplied in 1x PBS buffer with 0.09 % (w/v) sodium azide and 2 % sucrose.

Preservative: Sodium azide

Precaution of Use: This product contains Sodium azide: a POISONOUS AND HAZARDOUS SUBSTANCE which should be handled by trained staff only.

Handling Advice: Avoid repeat freeze-thaw cycles.

Storage: -20 °C

---

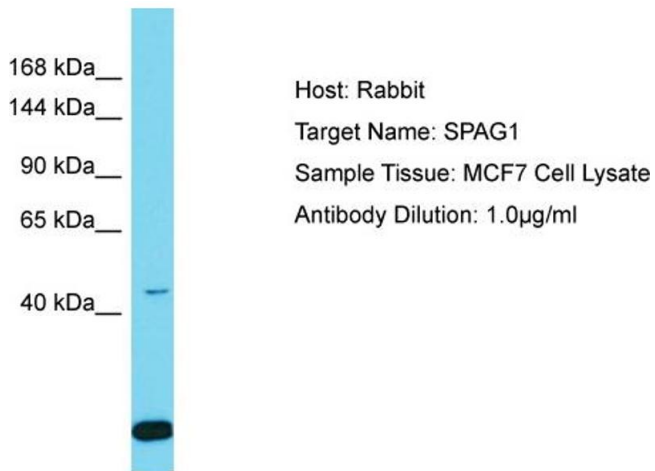
## Handling

---

Storage Comment: For short term use, store at 2-8°C up to 1 week. For long term storage, store at -20°C in small aliquots to prevent freeze-thaw cycles.

## Validation report #100203 for Western Blotting (WB)

---



Host: Rabbit  
Target Name: SPAG1  
Sample Tissue: MCF7 Cell Lysate  
Antibody Dilution: 1.0µg/ml

### Western Blotting

**Image 1.** Host: Rabbit Target Name: SPAG1 Sample Tissue: Human MCF7 Whole Cell Antibody Dilution: 1ug/ml