

Datasheet for ABIN2790232  
**anti-SPAG1 antibody (C-Term)**[Go to Product page](#)

## 1 Image

## Overview

Quantity:	100 µL
Target:	SPAG1
Binding Specificity:	C-Term
Reactivity:	Human
Host:	Rabbit
Clonality:	Polyclonal
Conjugate:	This SPAG1 antibody is un-conjugated
Application:	Western Blotting (WB)

## Product Details

Immunogen:	The immunogen is a synthetic peptide directed towards the C-terminal region of Human SPAG1
Sequence:	KIEIQEVNEG KEEPGRPAGE VSMGCLASEK GKGSSRSPED PEKLPIAKPN
Predicted Reactivity:	Human: 100%
Characteristics:	This is a rabbit polyclonal antibody against SPAG1. It was validated on Western Blot.
Purification:	Affinity Purified

## Target Details

Target:	SPAG1
Alternative Name:	SPAG1 ( <a href="#">SPAG1 Products</a> )
Background:	The correlation of anti-sperm antibodies with cases of unexplained infertility implicates a role

## Target Details

for these antibodies in blocking fertilization. Improved diagnosis and treatment of immunologic infertility, as well as identification of proteins for targeted contraception, are dependent on the identification and characterization of relevant sperm antigens. The protein expressed by this gene is recognized by anti-sperm agglutinating antibodies from an infertile woman.

Furthermore, immunization of female rats with the recombinant human protein reduced fertility.

This protein localizes to the plasma membrane of germ cells in the testis and to the post-acrosomal plasma membrane of mature spermatozoa. Recombinant polypeptide binds GTP and exhibits GTPase activity. Thus, this protein may regulate GTP signal transduction pathways involved in spermatogenesis and fertilization.

Alias Symbols: FLJ32920, HSD-3.8, SP75, TPIS

Protein Interaction Partner: UBC, GNB1, PCNA, PRKCA, DYT10,

Protein Size: 926

Molecular Weight:	104 kDa
-------------------	---------

Gene ID:	6674
----------	------

NCBI Accession:	<a href="#">NM_003114</a> , <a href="#">NP_003105</a>
-----------------	---

UniProt:	<a href="#">Q07617</a>
----------	------------------------

## Application Details

Application Notes:	Optimal working dilutions should be determined experimentally by the investigator.
--------------------	--

Comment:	Antigen size: 926 AA
----------	----------------------

Restrictions:	For Research Use only
---------------	-----------------------

## Handling

Format:	Liquid
---------	--------

Concentration:	Lot specific
----------------	--------------

Buffer:	Liquid. Purified antibody supplied in 1x PBS buffer with 0.09 % (w/v) sodium azide and 2 % sucrose.
---------	---

Preservative:	Sodium azide
---------------	--------------

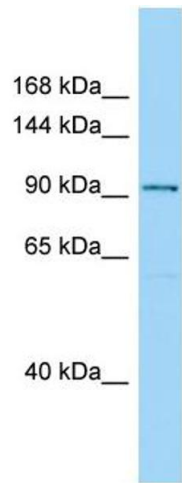
Precaution of Use:	This product contains Sodium azide: a POISONOUS AND HAZARDOUS SUBSTANCE which should be handled by trained staff only.
--------------------	--

Handling Advice:	Avoid repeated freeze-thaw cycles.
------------------	------------------------------------

Handling

Storage:	-20 °C
Storage Comment:	For short term use, store at 2-8°C up to 1 week. For long term storage, store at -20°C in small aliquots to prevent freeze-thaw cycles.

Validation report #100203 for Western Blotting (WB)



Western Blotting

**Image 1.** WB Suggested Anti-SPAG1 Antibody Titration: 1.0 ug/ml Positive Control: Fetal kidney