

Datasheet for ABIN2790235
anti-STARD6 antibody (N-Term)[Go to Product page](#)

1 Image

Overview

Quantity:	100 µL
Target:	STARD6
Binding Specificity:	N-Term
Reactivity:	Human, Rabbit, Rat, Cow, Dog, Mouse, Pig
Host:	Rabbit
Clonality:	Polyclonal
Conjugate:	This STARD6 antibody is un-conjugated
Application:	Western Blotting (WB)

Product Details

Immunogen:	The immunogen is a synthetic peptide directed towards the N-terminal region of Human STARD6
Sequence:	NRDTSGWKVV KTSKKITVSS KASRKFHGNL YRVEGIIPES PAKLSDFLYQ
Predicted Reactivity:	Cow: 92%, Dog: 93%, Human: 100%, Mouse: 83%, Pig: 83%, Rabbit: 92%, Rat: 92%
Characteristics:	This is a rabbit polyclonal antibody against STARD6. It was validated on Western Blot.
Purification:	Affinity Purified

Target Details

Target:	STARD6
Alternative Name:	STARD6 (STARD6 Products)

Target Details

Background:	<p>Cholesterol homeostasis is regulated, at least in part, by sterol regulatory element (SRE)-binding proteins and by liver X receptors. Upon sterol depletion, LXRs are inactive and SREBPs are cleaved, after which they bind promoter SREs and activate genes involved in cholesterol biosynthesis and uptake. Sterol transport is mediated by vesicles or by soluble protein carriers, such as steroidogenic acute regulatory protein. STAR is homologous to a family of proteins containing a 200- to 210-amino acid STAR-related lipid transfer (START) domain, including STARD6.</p> <p>Alias Symbols: -</p> <p>Protein Size: 220</p>
Molecular Weight:	25 kDa
Gene ID:	147323
NCBI Accession:	NM_139171 , NP_631910
UniProt:	P59095

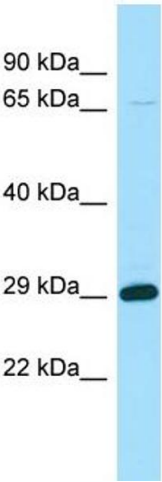
Application Details

Application Notes:	Optimal working dilutions should be determined experimentally by the investigator.
Comment:	Antigen size: 220 AA
Restrictions:	For Research Use only

Handling

Format:	Liquid
Concentration:	Lot specific
Buffer:	Liquid. Purified antibody supplied in 1x PBS buffer with 0.09 % (w/v) sodium azide and 2 % sucrose.
Preservative:	Sodium azide
Precaution of Use:	This product contains Sodium azide: a POISONOUS AND HAZARDOUS SUBSTANCE which should be handled by trained staff only.
Handling Advice:	Avoid repeated freeze-thaw cycles.
Storage:	-20 °C
Storage Comment:	For short term use, store at 2-8°C up to 1 week. For long term storage, store at -20°C in small

aliquots to prevent freeze-thaw cycles.



Western Blotting

Image 1. WB Suggested Anti-STARD6 Antibody Titration:
1.0 ug/ml Positive Control: Fetal Kidney