

Datasheet for ABIN2790240  
**anti-ACTG2 antibody (C-Term)**



[Go to Product page](#)

1 Image

## Overview

Quantity:	100 µL
Target:	ACTG2
Binding Specificity:	C-Term
Reactivity:	Human, Mouse, Rat, Cow, Rabbit, Guinea Pig, Horse, Dog, Goat, Saccharomyces cerevisiae, Zebrafish (Danio rerio)
Host:	Rabbit
Clonality:	Polyclonal
Conjugate:	This ACTG2 antibody is un-conjugated
Application:	Western Blotting (WB)

## Product Details

Immunogen:	The immunogen is a synthetic peptide directed towards the C-terminal region of Human ACTG2
Sequence:	TMKIKIIAPP ERKYSVWIGG SILASLSTFQ QMWISKPEYD EAGPSIVHRK
Predicted Reactivity:	Cow: 100%, Dog: 100%, Goat: 93%, Guinea Pig: 100%, Horse: 100%, Human: 100%, Mouse: 100%, Rabbit: 100%, Rat: 100%, Yeast: 93%, Zebrafish: 93%
Characteristics:	This is a rabbit polyclonal antibody against ACTG2. It was validated on Western Blot.
Purification:	Affinity Purified

## Target Details

Target:	ACTG2
---------	-------

## Target Details

Alternative Name:	ACTG2 ( <a href="#">ACTG2 Products</a> )
Background:	<p>Actins are highly conserved proteins that are involved in various types of cell motility and in the maintenance of the cytoskeleton. Three types of actins, alpha, beta and gamma, have been identified in vertebrates. Alpha actins are found in muscle tissues and are a major constituent of the contractile apparatus. The beta and gamma actins co-exist in most cell types as components of the cytoskeleton and as mediators of internal cell motility. This gene encodes actin gamma 2, a smooth muscle actin found in enteric tissues. Alternative splicing results in multiple transcript variants encoding distinct isoforms. Based on similarity to peptide cleavage of related actins, the mature protein of this gene is formed by removal of two N-terminal peptides.</p> <p>Alias Symbols: ACT, ACTA3, ACTE, ACTL3, ACTSG</p> <p>Protein Interaction Partner: UBC, KCNMA1, RL1, UBL4A, MLH1, LRRK2, SHBG, ARRB2, NOP56, CBL, KAT5, EMD,</p> <p>Protein Size: 376</p>
Molecular Weight:	42 kDa
Gene ID:	72
NCBI Accession:	<a href="#">NM_001615</a> , <a href="#">NP_001606</a>
UniProt:	<a href="#">P63267</a>

## Application Details

Application Notes:	Optimal working dilutions should be determined experimentally by the investigator.
Comment:	Antigen size: 376 AA
Restrictions:	For Research Use only

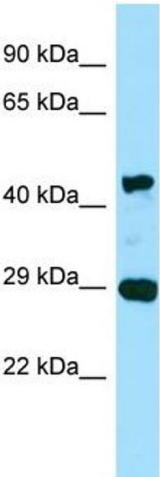
## Handling

Format:	Liquid
Concentration:	Lot specific
Buffer:	Liquid. Purified antibody supplied in 1x PBS buffer with 0.09 % (w/v) sodium azide and 2 % sucrose.
Preservative:	Sodium azide
Precaution of Use:	This product contains Sodium azide: a POISONOUS AND HAZARDOUS SUBSTANCE which

Handling

	should be handled by trained staff only.
Handling Advice:	Avoid repeated freeze-thaw cycles.
Storage:	-20 °C
Storage Comment:	For short term use, store at 2-8°C up to 1 week. For long term storage, store at -20°C in small aliquots to prevent freeze-thaw cycles.

Images



**Western Blotting**

**Image 1.** WB Suggested Anti-ACTG2 Antibody Titration:  
0.25 ug/ml Positive Control: Fetal Lung