

Datasheet for ABIN2790243

anti-ARPC1B antibody (Middle Region)[Go to Product page](#)**1** Image

Overview

Quantity:	100 µL
Target:	ARPC1B
Binding Specificity:	Middle Region
Reactivity:	Human, Mouse, Rat, Cow, Dog, Guinea Pig, Horse, Rabbit, Zebrafish (Danio rerio)
Host:	Rabbit
Clonality:	Polyclonal
Conjugate:	This ARPC1B antibody is un-conjugated
Application:	Western Blotting (WB)

Product Details

Immunogen:	The immunogen is a synthetic peptide directed towards the middle region of Human ARPC1B
Sequence:	KKPIRSTVLS LDWHPNNVLL AAGSCDFKCR IFSAYIKEVE ERPAPTPWGS
Predicted Reactivity:	Cow: 100%, Dog: 100%, Guinea Pig: 100%, Horse: 100%, Human: 100%, Mouse: 100%, Rabbit: 100%, Rat: 100%, Zebrafish: 93%
Characteristics:	This is a rabbit polyclonal antibody against ARPC1B. It was validated on Western Blot.
Purification:	Affinity Purified

Target Details

Target:	ARPC1B
Alternative Name:	ARPC1B (ARPC1B Products)

Target Details

Background:	<p>This gene encodes one of seven subunits of the human Arp2/3 protein complex. This subunit is a member of the SOP2 family of proteins and is most similar to the protein encoded by gene ARPC1A. The similarity between these two proteins suggests that they both may function as p41 subunit of the human Arp2/3 complex that has been implicated in the control of actin polymerization in cells. It is possible that the p41 subunit is involved in assembling and maintaining the structure of the Arp2/3 complex. Multiple versions of the p41 subunit may adapt the functions of the complex to different cell types or developmental stages. This protein also has a role in centrosomal homeostasis by being an activator and substrate of the Aurora A kinase.</p> <p>Alias Symbols: ARC41, p40-ARC, p41-ARC</p> <p>Protein Interaction Partner: SUMO2, UBC, SUMO1, NEDD8, BTF3L4, C14orf142, IPO11, TPRKB, PDCD4, ANP32B, ARPC2, ACTR2, ACTR3, ARPC3, ARPC4, ARPC5, TOM1L1, ANP32A, VBP1, UBE3A, TPD52L2, TPD52, RPA2, RANGAP1, PRKACB, PPP2R5D, METTL1, HSF1, DR1, DHPS, CALU, CALR, AARS, SRPK2, PAN2, WASL,</p> <p>Protein Size: 372</p>
Molecular Weight:	41 kDa
Gene ID:	10095
NCBI Accession:	NM_005720 , NP_005711
UniProt:	O15143
Pathways:	RTK Signaling , Regulation of Actin Filament Polymerization

Application Details

Application Notes:	Optimal working dilutions should be determined experimentally by the investigator.
Comment:	Antigen size: 372 AA
Restrictions:	For Research Use only

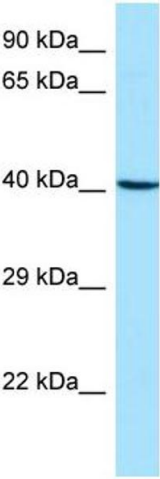
Handling

Format:	Liquid
Concentration:	Lot specific
Buffer:	Liquid. Purified antibody supplied in 1x PBS buffer with 0.09 % (w/v) sodium azide and 2 % sucrose.

Handling

Preservative:	Sodium azide
Precaution of Use:	This product contains Sodium azide: a POISONOUS AND HAZARDOUS SUBSTANCE which should be handled by trained staff only.
Handling Advice:	Avoid repeated freeze-thaw cycles.
Storage:	-20 °C
Storage Comment:	For short term use, store at 2-8°C up to 1 week. For long term storage, store at -20°C in small aliquots to prevent freeze-thaw cycles.

Images



Western Blotting

Image 1. WB Suggested Anti-ARPC1B Antibody Titration:
1.0 ug/ml Positive Control: Fetal Lung