

Datasheet for ABIN2790261  
**anti-KTI12 antibody (C-Term)**



[Go to Product page](#)

1 Image

## Overview

Quantity:	100 µL
Target:	KTI12
Binding Specificity:	C-Term
Reactivity:	Human, Rat
Host:	Rabbit
Clonality:	Polyclonal
Conjugate:	This KTI12 antibody is un-conjugated
Application:	Western Blotting (WB)

## Product Details

Immunogen:	The immunogen is a synthetic peptide directed towards the C-terminal region of Human KTI12
Sequence:	GAAESPALVT PDSEKSAKHG SGAFYSPELL EALTLRFEAP DSRNRWDRPL
Predicted Reactivity:	Human: 100%, Rat: 79%
Characteristics:	This is a rabbit polyclonal antibody against KTI12. It was validated on Western Blot.
Purification:	Affinity Purified

## Target Details

Target:	KTI12
Alternative Name:	<a href="#">KTI12 (KTI12 Products)</a>
Background:	The function of this protein remains unknown.

## Target Details

---

Alias Symbols: MGC20419, RP11-91A18.3, SBBI81, TOT4

Protein Interaction Partner: FHL3, UBC,

Protein Size: 354

---

Molecular Weight: 38 kDa

---

Gene ID: 112970

---

NCBI Accession: [NM\\_138417](#), [NP\\_612426](#)

---

UniProt: [Q96EK9](#)

---

## Application Details

---

Application Notes: Optimal working dilutions should be determined experimentally by the investigator.

---

Comment: Antigen size: 354 AA

---

Restrictions: For Research Use only

---

## Handling

---

Format: Liquid

---

Concentration: Lot specific

---

Buffer: Liquid. Purified antibody supplied in 1x PBS buffer with 0.09 % (w/v) sodium azide and 2 % sucrose.

---

Preservative: Sodium azide

---

Precaution of Use: This product contains Sodium azide: a POISONOUS AND HAZARDOUS SUBSTANCE which should be handled by trained staff only.

---

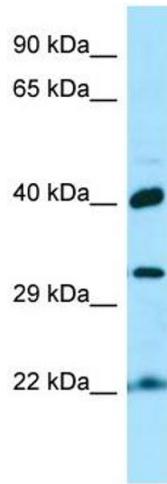
Handling Advice: Avoid repeated freeze-thaw cycles.

---

Storage: -20 °C

---

Storage Comment: For short term use, store at 2-8°C up to 1 week. For long term storage, store at -20°C in small aliquots to prevent freeze-thaw cycles.



### Western Blotting

**Image 1.** WB Suggested Anti-KTI12 Antibody Titration: 1.0 ug/ml Positive Control: Fetal kidney