

Datasheet for ABIN2790263
anti-LAMC3 antibody (C-Term)[Go to Product page](#)

1 Image

Overview

Quantity:	100 µL
Target:	LAMC3
Binding Specificity:	C-Term
Reactivity:	Human, Rabbit, Cow, Horse, Pig
Host:	Rabbit
Clonality:	Polyclonal
Conjugate:	This LAMC3 antibody is un-conjugated
Application:	Western Blotting (WB)

Product Details

Immunogen:	The immunogen is a synthetic peptide directed towards the C-terminal region of Human LAMC3
Sequence:	ERMLGNAAPL SSSAKKKGRE AEVLAKDSAK LAKALLRERK QAHRRASRLT
Predicted Reactivity:	Cow: 92%, Horse: 92%, Human: 100%, Pig: 92%, Rabbit: 83%
Characteristics:	This is a rabbit polyclonal antibody against LAMC3. It was validated on Western Blot.
Purification:	Affinity Purified

Target Details

Target:	LAMC3
Alternative Name:	LAMC3 (LAMC3 Products)

Target Details

Background:	<p>Laminins, a family of extracellular matrix glycoproteins, are the major noncollagenous constituent of basement membranes. They have been implicated in a wide variety of biological processes including cell adhesion, differentiation, migration, signaling, neurite outgrowth and metastasis. Laminins are composed of 3 non identical chains: laminin alpha, beta and gamma (formerly A, B1, and B2, respectively) and they form a cruciform structure consisting of 3 short arms, each formed by a different chain, and a long arm composed of all 3 chains. Each laminin chain is a multidomain protein encoded by a distinct gene.</p> <p>Alias Symbols: RP11-143H20.1, OCCM</p> <p>Protein Interaction Partner: YTHDC1, ZNF160, PELI2, CWC25, EPB41L4B, SLC43A3, POT1, RPL35, KIF1C, FRAT1, NR1H2, UBC, TF, LGMN, HP, CYP2E1, CSNK2A2, CRP, CFB, ANXA5, SERPINA3,</p> <p>Protein Size: 1379</p>
Molecular Weight:	140 kDa
Gene ID:	10319
NCBI Accession:	NM_006059
UniProt:	Q9Y6N6

Application Details

Application Notes:	Optimal working dilutions should be determined experimentally by the investigator.
Comment:	Antigen size: 1379 AA
Restrictions:	For Research Use only

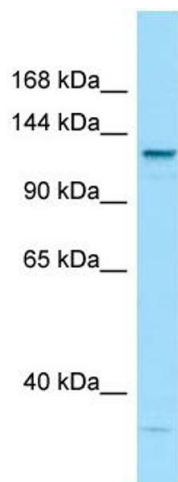
Handling

Format:	Liquid
Concentration:	Lot specific
Buffer:	Liquid. Purified antibody supplied in 1x PBS buffer with 0.09 % (w/v) sodium azide and 2 % sucrose.
Preservative:	Sodium azide
Precaution of Use:	This product contains Sodium azide: a POISONOUS AND HAZARDOUS SUBSTANCE which should be handled by trained staff only.
Handling Advice:	Avoid repeated freeze-thaw cycles.

Handling

Storage:	-20 °C
Storage Comment:	For short term use, store at 2-8°C up to 1 week. For long term storage, store at -20°C in small aliquots to prevent freeze-thaw cycles.

Images



Western Blotting

Image 1. WB Suggested Anti-LAMC3 Antibody Titration: 1.0 ug/ml Positive Control: Hela Whole Cell LAMC3 is supported by BioGPS gene expression data to be expressed in HeLa