

Datasheet for ABIN2790269

anti-MRPL12 antibody (Middle Region)[Go to Product page](#)**1** Image

Overview

Quantity:	100 µL
Target:	MRPL12
Binding Specificity:	Middle Region
Reactivity:	Human, Mouse, Rat, Cow, Dog, Guinea Pig, Horse, Zebrafish (Danio rerio)
Host:	Rabbit
Clonality:	Polyclonal
Conjugate:	This MRPL12 antibody is un-conjugated
Application:	Western Blotting (WB)

Product Details

Immunogen:	The immunogen is a synthetic peptide directed towards the middle region of Rat Mrpl12
Sequence:	RRSEALAGAP LDNAPKEYPP KIQQLVQDIA SLTLLEISDL NELLKKTLLKI
Predicted Reactivity:	Cow: 100%, Dog: 100%, Guinea Pig: 100%, Horse: 100%, Human: 100%, Mouse: 100%, Rat: 100%, Zebrafish: 79%
Characteristics:	This is a rabbit polyclonal antibody against Mrpl12. It was validated on Western Blot.
Purification:	Affinity Purified

Target Details

Target:	MRPL12
Alternative Name:	Mrpl12 (MRPL12 Products)

Target Details

Background: Mrpl12 is a mitochondrial ribosomal protein.
Alias Symbols: Rpm12
Protein Size: 276

Molecular Weight: 29 kDa

Gene ID: 303746

NCBI Accession: [NM_001029900](#), [NP_001025071](#)

UniProt: [D3ZXF9](#)

Application Details

Application Notes: Optimal working dilutions should be determined experimentally by the investigator.

Comment: Antigen size: 276 AA

Restrictions: For Research Use only

Handling

Format: Liquid

Concentration: Lot specific

Buffer: Liquid. Purified antibody supplied in 1x PBS buffer with 0.09 % (w/v) sodium azide and 2 % sucrose.

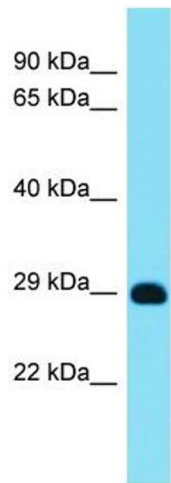
Preservative: Sodium azide

Precaution of Use: This product contains Sodium azide: a POISONOUS AND HAZARDOUS SUBSTANCE which should be handled by trained staff only.

Handling Advice: Avoid repeated freeze-thaw cycles.

Storage: -20 °C

Storage Comment: For short term use, store at 2-8°C up to 1 week. For long term storage, store at -20°C in small aliquots to prevent freeze-thaw cycles.



Western Blotting
Image 1. Host: Rabbit
Target Name: Mrpl12
Sample Tissue: Rat Lung lysates
Antibody Dilution: 1.0 µg/mL