

Datasheet for ABIN2790275  
**anti-PPP1CB antibody (C-Term)**



[Go to Product page](#)

1 Image

## Overview

Quantity:	100 µL
Target:	PPP1CB
Binding Specificity:	C-Term
Reactivity:	Human, Mouse, Rat, Cow, Dog, Horse, Rabbit, Zebrafish (Danio rerio), Guinea Pig, Goat
Host:	Rabbit
Clonality:	Polyclonal
Conjugate:	This PPP1CB antibody is un-conjugated
Application:	Western Blotting (WB)

## Product Details

Immunogen:	The immunogen is a synthetic peptide directed towards the C-terminal region of Human PPP1CB
Sequence:	VPDTGLLCDL LWSDPKDVQ GWGENDRGVS FTFGADVSK FLNRHDLCLI
Predicted Reactivity:	Cow: 100%, Dog: 100%, Goat: 93%, Guinea Pig: 100%, Horse: 100%, Human: 100%, Mouse: 100%, Rabbit: 100%, Rat: 100%, Zebrafish: 100%
Characteristics:	This is a rabbit polyclonal antibody against PPP1CB. It was validated on Western Blot.
Purification:	Affinity Purified

## Target Details

Target:	PPP1CB
---------	--------

## Target Details

Alternative Name:	PPP1CB ( <a href="#">PPP1CB Products</a> )
Background:	<p>The protein encoded by this gene is one of the three catalytic subunits of protein phosphatase 1 (PP1). PP1 is a serine/threonine specific protein phosphatase known to be involved in the regulation of a variety of cellular processes, such as cell division, glycogen metabolism, muscle contractility, protein synthesis, and HIV-1 viral transcription. Mouse studies suggest that PP1 functions as a suppressor of learning and memory. Two alternatively spliced transcript variants encoding distinct isoforms have been observed.</p> <p>Alias Symbols: MGC3672, PP-1B, PP1beta, PPP1CD</p> <p>Protein Interaction Partner: PPP1R3C, PPP1R2P3, PPP1R16A, CSRNP2, SH2D4A, UBC, TP53BP2, SUMO2, SUMO3, NUA1, EED, DENR, MVK, EEF1A1, DHX15, PAN2, RHO, ZFYVE9, MDM4, KAT8, WDR5, PAPOLA, OGT, AURKA, PPP1CA, HCFC1, CUL3, PTK2, MAX, LBR, HSPA4, CDKN2A, CDC34, CCND3, CCNB1, BCL2, CCND1, S</p> <p>Protein Size: 327</p>
Molecular Weight:	37 kDa
Gene ID:	5500
NCBI Accession:	<a href="#">NM_002709</a> , <a href="#">NP_002700</a>
UniProt:	<a href="#">P62140</a>
Pathways:	<a href="#">M Phase</a> , <a href="#">Cellular Glucan Metabolic Process</a> , <a href="#">Regulation of Carbohydrate Metabolic Process</a> , <a href="#">Lipid Metabolism</a>

## Application Details

Application Notes:	Optimal working dilutions should be determined experimentally by the investigator.
Comment:	Antigen size: 327 AA
Restrictions:	For Research Use only

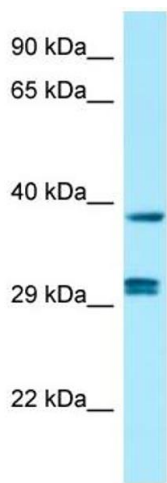
## Handling

Format:	Liquid
Concentration:	Lot specific
Buffer:	Liquid. Purified antibody supplied in 1x PBS buffer with 0.09 % (w/v) sodium azide and 2 % sucrose.
Preservative:	Sodium azide

## Handling

Precaution of Use:	This product contains Sodium azide: a POISONOUS AND HAZARDOUS SUBSTANCE which should be handled by trained staff only.
Handling Advice:	Avoid repeated freeze-thaw cycles.
Storage:	-20 °C
Storage Comment:	For short term use, store at 2-8°C up to 1 week. For long term storage, store at -20°C in small aliquots to prevent freeze-thaw cycles.

## Images



**Western Blotting**

**Image 1.** WB Suggested Anti-PPP1CB Antibody Titration:  
1.0 ug/ml Positive Control: Fetal Kidney