

Datasheet for ABIN2790279  
**anti-SLC13A1 antibody (N-Term)**[Go to Product page](#)

## 1 Image

## Overview

Quantity:	100 µL
Target:	SLC13A1
Binding Specificity:	N-Term
Reactivity:	Human, Cow, Dog
Host:	Rabbit
Clonality:	Polyclonal
Conjugate:	This SLC13A1 antibody is un-conjugated
Application:	Western Blotting (WB)

## Product Details

Immunogen:	The immunogen is a synthetic peptide directed towards the N-terminal region of Human SLC13A1
Sequence:	MTYFNGSTNH GLEIDESVNG HEINERKEKT KPVPGYNNDT GKISSKVELE
Predicted Reactivity:	Cow: 85%, Dog: 85%, Human: 100%
Characteristics:	This is a rabbit polyclonal antibody against SLC13A1. It was validated on Western Blot.
Purification:	Affinity Purified

## Target Details

Target:	SLC13A1
Alternative Name:	SLC13A1 ( <a href="#">SLC13A1 Products</a> )

## Target Details

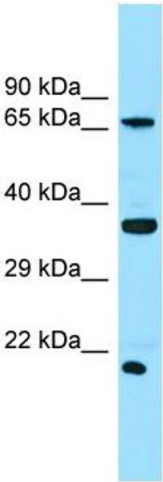
Background:	SLC13A1 is a sodium/sulfate cotransporter that mediates sulfate reabsorption in the kidney. Alias Symbols: NAS1, NaSi-1 Protein Size: 595
Molecular Weight:	66 kDa
Gene ID:	6561
NCBI Accession:	<a href="#">NM_022444</a> , <a href="#">NP_071889</a>
UniProt:	<a href="#">Q9BZW2</a>

## Application Details

Application Notes:	Optimal working dilutions should be determined experimentally by the investigator.
Comment:	Antigen size: 595 AA
Restrictions:	For Research Use only

## Handling

Format:	Liquid
Concentration:	Lot specific
Buffer:	Liquid. Purified antibody supplied in 1x PBS buffer with 0.09 % (w/v) sodium azide and 2 % sucrose.
Preservative:	Sodium azide
Precaution of Use:	This product contains Sodium azide: a POISONOUS AND HAZARDOUS SUBSTANCE which should be handled by trained staff only.
Handling Advice:	Avoid repeated freeze-thaw cycles.
Storage:	-20 °C
Storage Comment:	For short term use, store at 2-8°C up to 1 week. For long term storage, store at -20°C in small aliquots to prevent freeze-thaw cycles.



Western Blotting

**Image 1.** WB Suggested Anti-SLC13A1 Antibody Titration:  
1.0 ug/ml Positive Control: THP-1 Whole Cell