

Datasheet for ABIN2790280
anti-STXBP4 antibody (N-Term)[Go to Product page](#)

1 Image

Overview

| | |
|----------------------|---------------------------------------|
| Quantity: | 100 µL |
| Target: | STXBP4 |
| Binding Specificity: | N-Term |
| Reactivity: | Human |
| Host: | Rabbit |
| Clonality: | Polyclonal |
| Conjugate: | This STXBP4 antibody is un-conjugated |
| Application: | Western Blotting (WB) |

Product Details

| | |
|-----------------------|---|
| Immunogen: | The immunogen is a synthetic peptide directed towards the N-terminal region of Human STXBP4 |
| Sequence: | SVNKESMIGV SFEEAKSIIT GAKLRLESAW EIAFIRQKSD NIQPENLSCT |
| Predicted Reactivity: | Human: 100% |
| Characteristics: | This is a rabbit polyclonal antibody against STXBP4. It was validated on Western Blot. |
| Purification: | Affinity Purified |

Target Details

| | |
|-------------------|--|
| Target: | STXBP4 |
| Alternative Name: | STXBP4 (STXBP4 Products) |

Target Details

| | |
|-------------------|--|
| Background: | <p>STXBP4 plays a role in the translocation of transport vesicles from the cytoplasm to the plasma membrane. STXBP4 inhibits the translocation of SLC2A4 from intracellular vesicles to the plasma membrane by STX4A binding and preventing the interaction between STX4A and VAMP2. Stimulation with insulin disrupts the interaction with STX4A, leading to increased levels of SLC2A4 at the plasma membrane. STXBP4 may also play a role in the regulation of insulin release by pancreatic beta cells after stimulation by glucose.</p> <p>Alias Symbols: FLJ16496, MGC149829, MGC50337, Synip</p> <p>Protein Interaction Partner: KLHL42, LATS2, ATN1, UBC, Plk1, STX4,</p> <p>Protein Size: 553</p> |
| Molecular Weight: | 62 kDa |
| Gene ID: | 252983 |
| NCBI Accession: | NM_178509 , NP_848604 |
| UniProt: | Q6ZMJ1 |

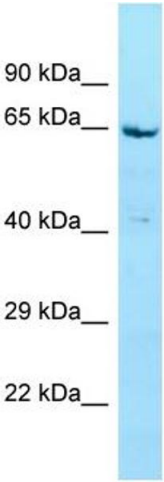
Application Details

| | |
|--------------------|--|
| Application Notes: | Optimal working dilutions should be determined experimentally by the investigator. |
| Comment: | Antigen size: 553 AA |
| Restrictions: | For Research Use only |

Handling

| | |
|--------------------|--|
| Format: | Liquid |
| Concentration: | Lot specific |
| Buffer: | Liquid. Purified antibody supplied in 1x PBS buffer with 0.09 % (w/v) sodium azide and 2 % sucrose. |
| Preservative: | Sodium azide |
| Precaution of Use: | This product contains Sodium azide: a POISONOUS AND HAZARDOUS SUBSTANCE which should be handled by trained staff only. |
| Handling Advice: | Avoid repeated freeze-thaw cycles. |
| Storage: | -20 °C |
| Storage Comment: | For short term use, store at 2-8°C up to 1 week. For long term storage, store at -20°C in small |

aliquots to prevent freeze-thaw cycles.



Western Blotting

Image 1. WB Suggested Anti-STXBP4 Antibody Titration: 1.0 ug/ml Positive Control: MCF7 Whole Cell