



Datasheet for ABIN2790283  
**anti-ABHD6 antibody (C-Term)**



[Go to Product page](#)

1 Image

Overview

Quantity:	100 µL
Target:	ABHD6
Binding Specificity:	C-Term
Reactivity:	Human, Mouse, Rat, Cow, Dog, Rabbit, Guinea Pig
Host:	Rabbit
Clonality:	Polyclonal
Conjugate:	This ABHD6 antibody is un-conjugated
Application:	Western Blotting (WB)

Product Details

Immunogen:	The immunogen is a synthetic peptide directed towards the C-terminal region of Human ABHD6
Sequence:	MLAKSIANCQ VELLENCGHS VVMERPRKTA KLIIDFLASV HNTDNNKKLD
Predicted Reactivity:	Cow: 86%, Dog: 79%, Guinea Pig: 93%, Human: 100%, Mouse: 86%, Rabbit: 100%, Rat: 86%
Characteristics:	This is a rabbit polyclonal antibody against ABHD6. It was validated on Western Blot.
Purification:	Affinity Purified

Target Details

Target:	ABHD6
Alternative Name:	ABHD6 ( <a href="#">ABHD6 Products</a> )
Background:	ABHD6 has 2-arachidonoylglycerol hydrolase activity. ABHD6 may be a regulator of

## Target Details

---

endocannabinoid signaling pathways.

Alias Symbols: -

Protein Interaction Partner: PCGF2, CKMT2, UBC,

Protein Size: 337

---

Molecular Weight: 38 kDa

---

Gene ID: 57406

---

NCBI Accession: [NM\\_020676](#), [NP\\_065727](#)

---

UniProt: [Q9BV23](#)

---

Pathways: [Regulation of G-Protein Coupled Receptor Protein Signaling](#)

## Application Details

---

Application Notes: Optimal working dilutions should be determined experimentally by the investigator.

---

Comment: Antigen size: 337 AA

---

Restrictions: For Research Use only

## Handling

---

Format: Liquid

---

Concentration: Lot specific

---

Buffer: Liquid. Purified antibody supplied in 1x PBS buffer with 0.09 % (w/v) sodium azide and 2 % sucrose.

---

Preservative: Sodium azide

---

Precaution of Use: This product contains Sodium azide: a POISONOUS AND HAZARDOUS SUBSTANCE which should be handled by trained staff only.

---

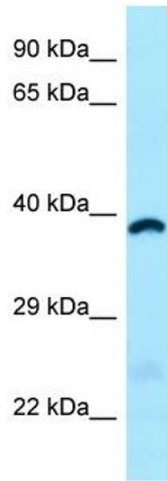
Handling Advice: Avoid repeated freeze-thaw cycles.

---

Storage: -20 °C

---

Storage Comment: For short term use, store at 2-8°C up to 1 week. For long term storage, store at -20°C in small aliquots to prevent freeze-thaw cycles.



### Western Blotting

**Image 1.** WB Suggested Anti-ABHD6 Antibody Titration:  
1.0 ug/ml Positive Control: Fetal Heart