

Datasheet for ABIN2790291  
**anti-EPYC antibody (Middle Region)**[Go to Product page](#)

## 1 Image

## Overview

Quantity:	100 µL
Target:	EPYC
Binding Specificity:	Middle Region
Reactivity:	Human, Mouse, Cow, Dog, Rabbit, Rat, Guinea Pig, Horse
Host:	Rabbit
Clonality:	Polyclonal
Conjugate:	This EPYC antibody is un-conjugated
Application:	Western Blotting (WB)

## Product Details

Immunogen:	The immunogen is a synthetic peptide directed towards the middle region of Human EPYC
Sequence:	FYSRFNRIKK INKNDFASLS DLKRIDLTSN LISEIDEDAF RKLPQLRELV
Predicted Reactivity:	Cow: 100%, Dog: 100%, Guinea Pig: 93%, Horse: 93%, Human: 100%, Mouse: 100%, Rabbit: 100%, Rat: 100%
Characteristics:	This is a rabbit polyclonal antibody against EPYC. It was validated on Western Blot.
Purification:	Affinity Purified

## Target Details

Target:	EPYC
Alternative Name:	EPYC ( <a href="#">EPYC Products</a> )

## Target Details

Background:	Dermatan sulfate proteoglycan 3 is a member of the small leucine-rich repeat proteoglycan family. This gene is composed of seven exons. It regulates fibrillogenesis by interacting with collagen fibrils and other extracellular matrix proteins. Alias Symbols: DSPG3, PGLB, Pg-Lb, SLRR3B Protein Size: 322
-------------	--

Molecular Weight:	35 kDa
-------------------	--------

Gene ID:	1833
----------	------

NCBI Accession:	<a href="#">NM_004950</a> , <a href="#">NP_004941</a>
-----------------	---

UniProt:	<a href="#">Q99645</a>
----------	------------------------

## Application Details

Application Notes:	Optimal working dilutions should be determined experimentally by the investigator.
--------------------	--

Comment:	Antigen size: 322 AA
----------	----------------------

Restrictions:	For Research Use only
---------------	-----------------------

## Handling

Format:	Liquid
---------	--------

Concentration:	Lot specific
----------------	--------------

Buffer:	Liquid. Purified antibody supplied in 1x PBS buffer with 0.09 % (w/v) sodium azide and 2 % sucrose.
---------	---

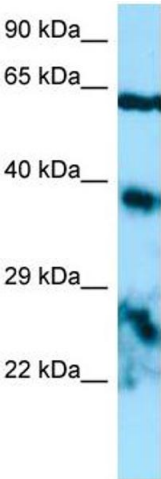
Preservative:	Sodium azide
---------------	--------------

Precaution of Use:	This product contains Sodium azide: a POISONOUS AND HAZARDOUS SUBSTANCE which should be handled by trained staff only.
--------------------	--

Handling Advice:	Avoid repeated freeze-thaw cycles.
------------------	------------------------------------

Storage:	-20 °C
----------	--------

Storage Comment:	For short term use, store at 2-8°C up to 1 week. For long term storage, store at -20°C in small aliquots to prevent freeze-thaw cycles.
------------------	---



Western Blotting

**Image 1.** WB Suggested Anti-EPYC Antibody Titration: 1.0 ug/ml Positive Control: HepG2 Whole Cell