

Datasheet for ABIN2790297  
**anti-LILRA4 antibody (C-Term)**[Go to Product page](#)

## 2 Images

## Overview

Quantity:	100 µL
Target:	LILRA4
Binding Specificity:	C-Term
Reactivity:	Human
Host:	Rabbit
Clonality:	Polyclonal
Conjugate:	This LILRA4 antibody is un-conjugated
Application:	Western Blotting (WB)

## Product Details

Immunogen:	The immunogen is a synthetic peptide directed towards the C-terminal region of Human LILRA4
Sequence:	ATETLNPAQK KSDSKTAPHL QDYTVENLIR MGVAGLVLLF LGILLFEAQH
Predicted Reactivity:	Human: 100%
Characteristics:	This is a rabbit polyclonal antibody against LILRA4. It was validated on Western Blot.
Purification:	Affinity Purified

## Target Details

Target:	LILRA4
Alternative Name:	LILRA4 ( <a href="#">LILRA4 Products</a> )
Background:	This gene encodes an immunoglobulin-like cell surface protein preferentially expressed in

## Target Details

plasmacytoid dendritic cells (PDCs). This gene is highly expressed in PDCs, and is found to be rapidly down-regulated by interleukin 3 (IL3). This gene is one of the 19 highly related genes that form a leukocyte receptor gene cluster (LRC) at chromosomal region 19q13.4.

Alias Symbols: CD85g, ILT7, MGC129597, MGC129598

Protein Size: 499

Molecular Weight: 50 kDa

Gene ID: 23547

NCBI Accession: [NM\\_012276](#), [NP\\_036408](#)

UniProt: [P59901](#)

## Application Details

Application Notes: Optimal working dilutions should be determined experimentally by the investigator.

Comment: Antigen size: 499 AA

Restrictions: For Research Use only

## Handling

Format: Liquid

Concentration: Lot specific

Buffer: Liquid. Purified antibody supplied in 1x PBS buffer with 0.09 % (w/v) sodium azide and 2 % sucrose.

Preservative: Sodium azide

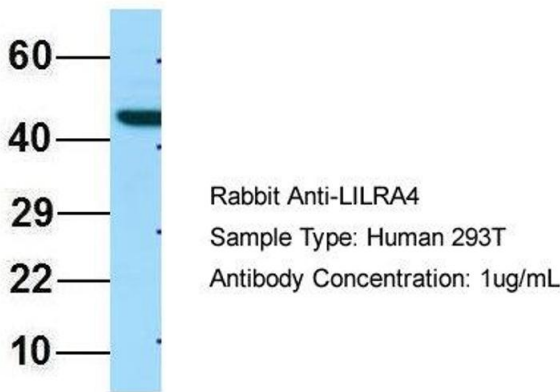
Precaution of Use: This product contains Sodium azide: a POISONOUS AND HAZARDOUS SUBSTANCE which should be handled by trained staff only.

Handling Advice: Avoid repeated freeze-thaw cycles.

Storage: -20 °C

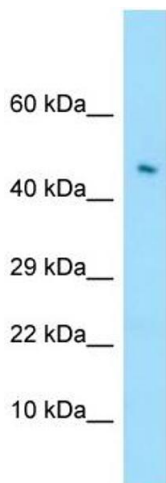
Storage Comment: For short term use, store at 2-8°C up to 1 week. For long term storage, store at -20°C in small aliquots to prevent freeze-thaw cycles.

# LILRA4



## Western Blotting

**Image 1.** Host: Rabbit Target Name: LILRA4 Sample Type: 293T Antibody Dilution: 1.0 µg/ml



## Western Blotting

**Image 2.** WB Suggested Anti-LILRA4 Antibody Titration: 1.0 µg/ml Positive Control: 721\_B Whole Cell