

Datasheet for ABIN2790299
anti-MTX3 antibody (N-Term)



[Go to Product page](#)

1 Image

Overview

Quantity:	100 µL
Target:	MTX3
Binding Specificity:	N-Term
Reactivity:	Cow, Dog, Horse, Human, Guinea Pig, Mouse, Rat, Zebrafish (Danio rerio), Pig, Rabbit
Host:	Rabbit
Clonality:	Polyclonal
Conjugate:	This MTX3 antibody is un-conjugated
Application:	Western Blotting (WB)

Product Details

Immunogen:	The immunogen is a synthetic peptide directed towards the N-terminal region of Human MTX3
Sequence:	VSQPAKILNF LRKQKYNADY ELSAKQGADT LAYIALLEEK LLPAVLHTFW
Predicted Reactivity:	Cow: 100%, Dog: 100%, Guinea Pig: 93%, Horse: 100%, Human: 100%, Mouse: 93%, Pig: 100%, Rabbit: 86%, Rat: 100%, Zebrafish: 93%
Characteristics:	This is a rabbit polyclonal antibody against MTX3. It was validated on Western Blot.
Purification:	Affinity Purified

Target Details

Target:	MTX3
Alternative Name:	MTX3 (MTX3 Products)

Target Details

Background: The function of this protein remains unknown.
Alias Symbols: DKFZp686O1788
Protein Interaction Partner: UBC,
Protein Size: 251

Molecular Weight: 27 kDa

Gene ID: 345778

NCBI Accession: [NM_001167741](#), [NP_001161213](#)

UniProt: [E9PB57](#)

Application Details

Application Notes: Optimal working dilutions should be determined experimentally by the investigator.

Comment: Antigen size: 251 AA

Restrictions: For Research Use only

Handling

Format: Liquid

Concentration: Lot specific

Buffer: Liquid. Purified antibody supplied in 1x PBS buffer with 0.09 % (w/v) sodium azide and 2 % sucrose.

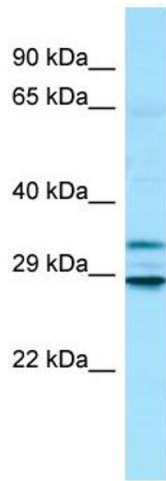
Preservative: Sodium azide

Precaution of Use: This product contains Sodium azide: a POISONOUS AND HAZARDOUS SUBSTANCE which should be handled by trained staff only.

Handling Advice: Avoid repeated freeze-thaw cycles.

Storage: -20 °C

Storage Comment: For short term use, store at 2-8°C up to 1 week. For long term storage, store at -20°C in small aliquots to prevent freeze-thaw cycles.



Western Blotting

Image 1. WB Suggested Anti-MTX3 Antibody Titration: 1.0 ug/ml Positive Control: Fetal Heart