

Datasheet for ABIN2790311  
**anti-SNTA1 antibody (N-Term)**



[Go to Product page](#)

1 Image

## Overview

Quantity:	100 µL
Target:	SNTA1
Binding Specificity:	N-Term
Reactivity:	Human, Mouse, Rat, Cow, Rabbit, Guinea Pig, Horse
Host:	Rabbit
Clonality:	Polyclonal
Conjugate:	This SNTA1 antibody is un-conjugated
Application:	Western Blotting (WB)

## Product Details

Immunogen:	The immunogen is a synthetic peptide directed towards the N-terminal region of human SNTA1
Sequence:	SPGPTPRNFS EAKHMSLKMA YVSKRCTPND PEPRYLEICS ADGQDTLFLR
Predicted Reactivity:	Cow: 79%, Guinea Pig: 86%, Horse: 82%, Human: 100%, Mouse: 86%, Rabbit: 79%, Rat: 86%
Characteristics:	This is a rabbit polyclonal antibody against SNTA1. It was validated on Western Blot.
Purification:	Affinity Purified

## Target Details

Target:	SNTA1
Alternative Name:	SNTA1 ( <a href="#">SNTA1 Products</a> )
Background:	Syntrophins are cytoplasmic peripheral membrane scaffold proteins that are components of

## Target Details

the dystrophin-associated protein complex. This gene is a member of the syntrophin gene family and encodes the most common syntrophin isoform found in cardiac tissues. The N-terminal PDZ domain of this syntrophin protein interacts with the C-terminus of the pore-forming alpha subunit (SCN5A) of the cardiac sodium channel Nav1.5. This protein also associates cardiac sodium channels with the nitric oxide synthase-PMCA4b (plasma membrane Ca-ATPase subtype 4b) complex in cardiomyocytes. This gene is a susceptibility locus for Long-QT syndrome (LQT) - an inherited disorder associated with sudden cardiac death from arrhythmia - and sudden infant death syndrome (SIDS). This protein also associates with dystrophin and dystrophin-related proteins at the neuromuscular junction and alters intracellular calcium ion levels in muscle tissue.

Alias Symbols: SNT1, LQT12, TACIP1, dJ1187J4.5

Protein Size: 396

Molecular Weight:	43 kDa
Gene ID:	6640
NCBI Accession:	<a href="#">NM_003098</a> , <a href="#">NP_003089</a>
UniProt:	<a href="#">Q13424</a>
Pathways:	<a href="#">Synaptic Membrane</a> , <a href="#">Skeletal Muscle Fiber Development</a>

## Application Details

Application Notes:	Optimal working dilution should be determined by the investigator.
Restrictions:	For Research Use only

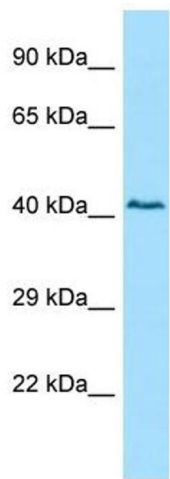
## Handling

Format:	Liquid
Concentration:	1 mg/mL
Buffer:	Liquid. Purified antibody supplied in 1x PBS buffer with 0.09 % (w/v) sodium azide and 2 % sucrose.
Preservative:	Sodium azide
Precaution of Use:	This product contains Sodium azide: a POISONOUS AND HAZARDOUS SUBSTANCE which should be handled by trained staff only.
Handling Advice:	Avoid repeat freeze-thaw cycles.

Handling

Storage:	-20 °C
Storage Comment:	For short term use, store at 2-8°C up to 1 week. For long term storage, store at -20°C in small aliquots to prevent freeze-thaw cycles.

Images



**Western Blotting**

**Image 1.**