

Datasheet for ABIN2790317
anti-TUBB2B antibody (N-Term)



[Go to Product page](#)

1 Image

Overview

Quantity:	100 µL
Target:	TUBB2B
Binding Specificity:	N-Term
Reactivity:	Human, Mouse, Rat, Cow, Sheep
Host:	Rabbit
Clonality:	Polyclonal
Conjugate:	This TUBB2B antibody is un-conjugated
Application:	Western Blotting (WB)

Product Details

Immunogen:	The immunogen is a synthetic peptide directed towards the N-terminal region of Human TUBB2B
Sequence:	GGGTGSGMGT LLISKIREEY PDRIMNTFSV MPSPKVSDTV VEPYNATLSV
Predicted Reactivity:	Cow: 100%, Human: 100%, Mouse: 100%, Rat: 100%, Sheep: 100%
Characteristics:	This is a rabbit polyclonal antibody against TUBB2B. It was validated on Western Blot.
Purification:	Affinity Purified

Target Details

Target:	TUBB2B
Alternative Name:	TUBB2B (TUBB2B Products)

Target Details

Background:	<p>The protein encoded by this gene is a beta isoform of tubulin, which binds GTP and is a major component of microtubules. This gene is highly similar to TUBB2A and TUBB2C. Defects in this gene are a cause of asymmetric polymicrogyria.</p> <p>Alias Symbols: DKFZp566F223, FLJ98847, MGC8685, TUBB-PARALOG, bA506K6.1</p> <p>Protein Interaction Partner: CEP250, SUMO2, UBC, ASB17, rev, FBX06, CD81, METTL22, PEX14, ITGA4, HSP90AA1, TRAF3IP1, YWHAE, TUBA1B, SHC1, INPPL1, CUL3, SUMO1, CENPU, C8orf33, RPL35, RGS2, CSNK2B, CDKN1A, BID, ANXA7, CACNA1A, HDAC6, MDK,</p> <p>Protein Size: 445</p>
Molecular Weight:	50 kDa
Gene ID:	347733
NCBI Accession:	NM_178012 , NP_821080
UniProt:	Q9BVA1
Pathways:	Microtubule Dynamics

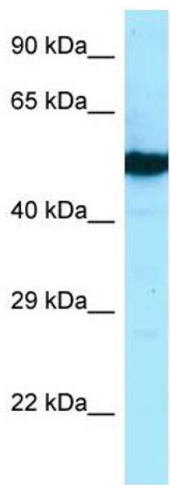
Application Details

Application Notes:	Optimal working dilutions should be determined experimentally by the investigator.
Comment:	Antigen size: 445 AA
Restrictions:	For Research Use only

Handling

Format:	Liquid
Concentration:	Lot specific
Buffer:	Liquid. Purified antibody supplied in 1x PBS buffer with 0.09 % (w/v) sodium azide and 2 % sucrose.
Preservative:	Sodium azide
Precaution of Use:	This product contains Sodium azide: a POISONOUS AND HAZARDOUS SUBSTANCE which should be handled by trained staff only.
Handling Advice:	Avoid repeated freeze-thaw cycles.
Storage:	-20 °C
Storage Comment:	For short term use, store at 2-8°C up to 1 week. For long term storage, store at -20°C in small

aliquots to prevent freeze-thaw cycles.



Western Blotting

Image 1. WB Suggested Anti-TUBB2B Antibody Titration:
1.0 ug/ml Positive Control: MCF7 Whole Cell